

Features

- Capable of displaying alarms, supervisory, trouble status for 16 zones
- Common LEDs for status indication
- Maximum 10 LED-4410G3 for: PFC-4410G3
- Maximum P-Link wire length of 6,500 feet
- Product includes a 5 year warranty



NOTICE

This document contains important information on the installation and operation of the LED-4410G3. Please read all instructions carefully and notify the building owner or their authorized representative before any work is done on the fire sprinkler or fire alarm system. A copy of this document is required by NFPA 72 to be maintained on site.



Description

The LED-4410G3 is a LED annunciator for the Potter PFC-4410G3. The LED-4410G3 communicates using a RS-485 (P-Link) connection to the Main Panel providing zone specific indication of Alarm, Supervisory, Trouble conditions. The LED-4410G3 features 2 slide-in labels allowing each of the 16 zones to be customized for any application. It can be mounted on a single gang electrical box or a four-square electrical box. The annunciator utilizes a sheet metal enclosure secured with a Potter lock.

Technical Specifications

P-Link Standby Current (24VDC)	25 mA
P-Link Alarm Current (24VDC)	30 mA
LED PWR Standby Current (24 VDC)	10 mA
LED PWR Alarm Current (24 VDC)	210 mA
Operating Temperature	0°C-49°C (32°F-120°F)
Environmental Limitations	Indoor Dry Use
Maximum Wire Length	6500 ft.
Maximum Displays	10
Size (WxHxD)	10" x 7-7/8" x 1-5/8"
Wire Gauge	12 AWG-22 AWG

*Specifications subject to change without notice

WARNING

- Installation must be performed by qualified personnel and in accordance with all national and local codes and ordinances.
- Shock hazard. Disconnect power source before servicing. Serious injury or death could result.
- Read all instructions carefully and understand them before starting installation. Save instructions for future use. Failure to read and understand instructions could result in improper operation of device resulting in serious injury or death.

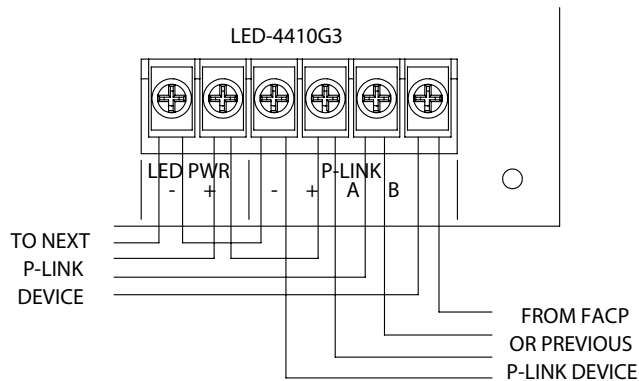
Installation

The LED-4410G3 is connected to the PFC-4410G3 releasing control panels using a four wire RS-485 connection. The connection is power limited and supervised. Up to ten (10) LED-4410G3 annunciators can be connected using Class B or Class A wiring. Class A wiring requires an optional Class A Expander. The higher current required for the LED outputs can be provided by the panel, or from an auxiliary power source as shown below. The auxiliary power can be any 24VDC listed source, and is fully supervised. Blank zone labels are provided for use with the LED-4410G3 to label each zone name or identifier. The labels may be printed or written on the supplied card-stock, and then inserted into the back of the front panel as shown in Figure 2.

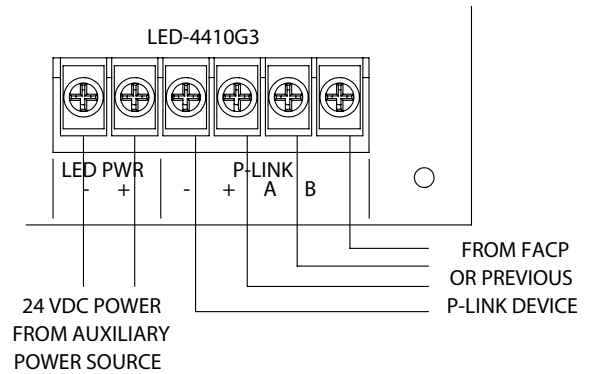
LED-4410G3 Wiring Diagrams

Fig 1

LEDs Powered by P-Link



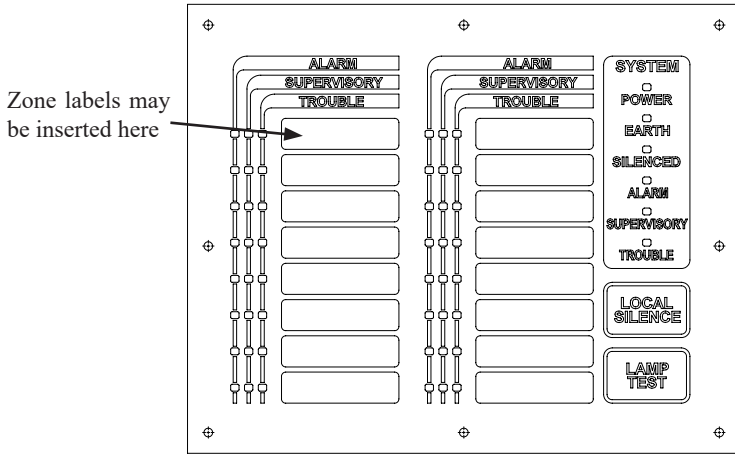
LEDs Powered by auxiliary supply



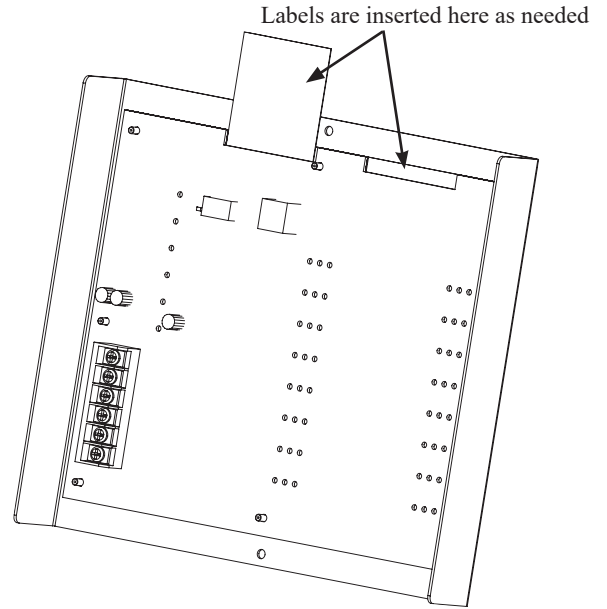
WARNING

An uninsulated section of a single conductor should not be looped around the terminal and serve as two separate connections. The wire must be severed, thereby providing supervision of the connection in the event that the wire becomes dislodged from under the terminal. Failure to sever the wire may render the device inoperable risking severe property damage and loss of life. Do not strip wire beyond 3/8" of length or expose an uninsulated conductor beyond the edge of the terminal block. When using stranded wire, capture all strands under the clamping plate.

LED-4410G3 Zone Labels
Fig 2



DWG #608-4

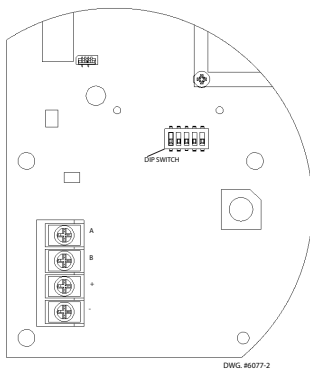


DWG #608-5

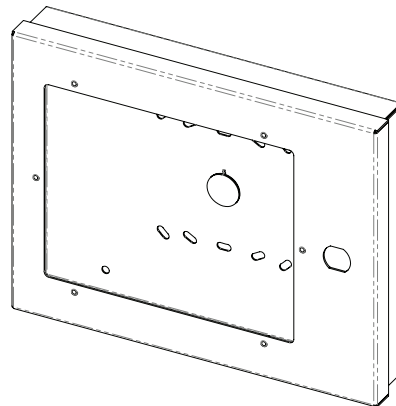
Address Settings

The LED-4410G3 address is set by dip switch S1 located on the back of the LED-4410G3. The address must be set in the range of 1 to 31 to be recognized by the control panel.

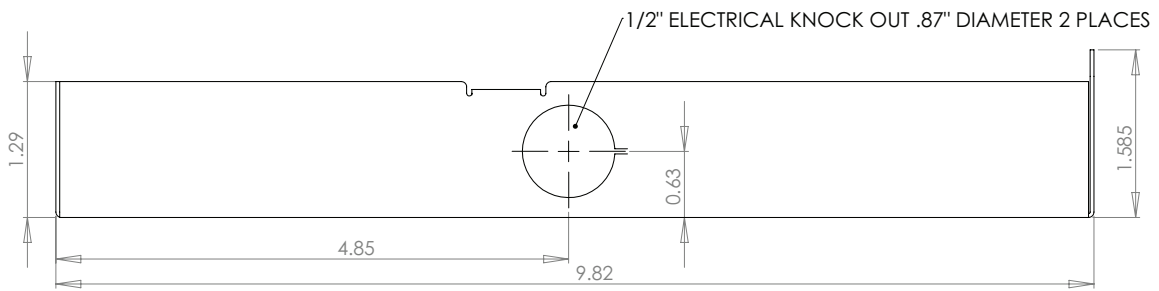
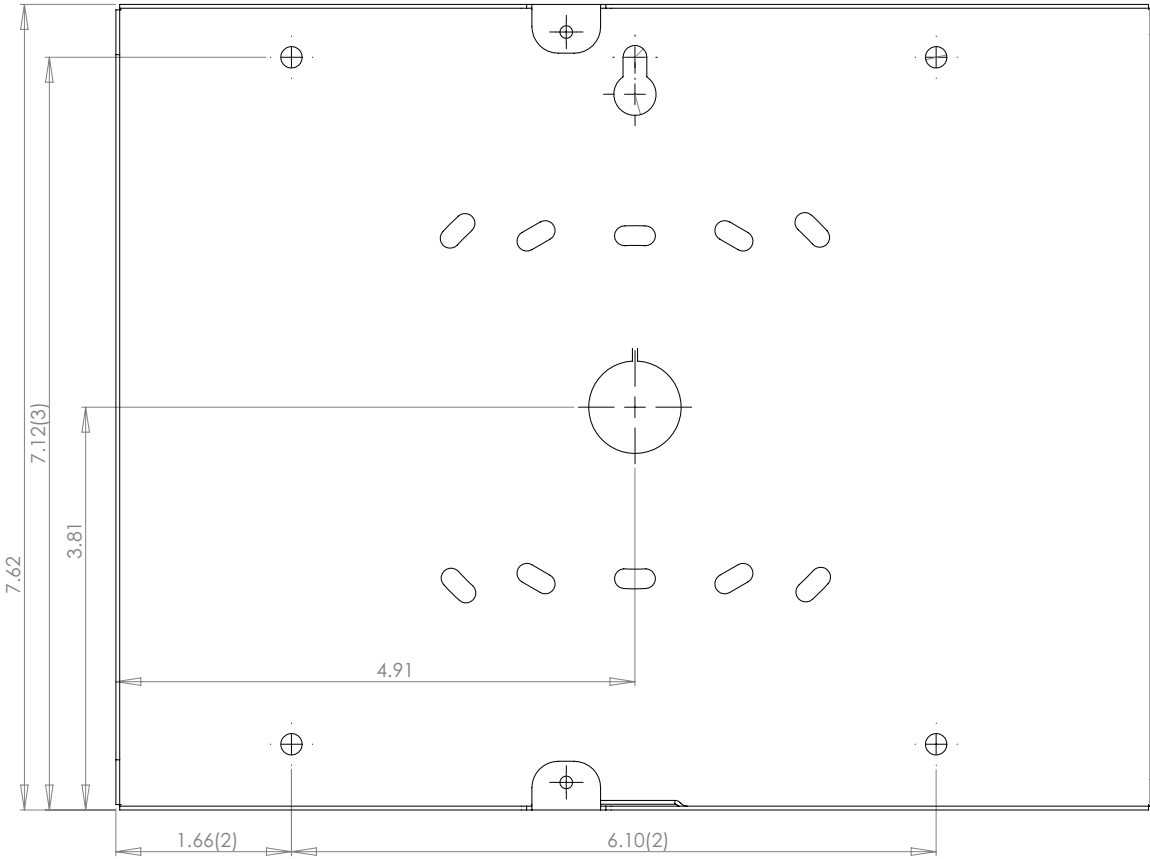
LED-4410G3 Remote (Panel View)
Fig 3



LED-4410G3 Enclosure
Fig 4



Dimensions



Dip Switch Settings

Refer to the table below for dip switch settings per Annunciator Address.

Annunciator Address	Dip Switch Settings				
	SW-1	SW-2	SW-3	SW-4	SW-5
1	On	Off	Off	Off	Off
2	Off	On	Off	Off	Off
3	On	On	Off	Off	Off
4	Off	Off	On	Off	Off
5	On	Off	On	Off	Off
6	Off	On	On	Off	Off
7	On	On	On	Off	Off
8	Off	Off	Off	On	Off
9	On	Off	Off	On	Off
10	Off	On	Off	On	Off
11	On	On	Off	On	Off
12	Off	Off	On	On	Off
13	On	Off	On	On	Off
14	Off	On	On	On	Off
15	On	On	On	On	Off
16	Off	Off	Off	Off	On

Annunciator Address	Dip Switch Settings				
	SW-1	SW-2	SW-3	SW-4	SW-5
17	On	Off	Off	Off	On
18	Off	On	Off	Off	On
19	On	On	Off	Off	On
20	Off	Off	On	Off	On
21	On	Off	On	Off	On
22	Off	On	On	Off	On
23	On	On	On	Off	On
24	Off	Off	Off	On	On
25	On	Off	Off	On	On
26	Off	On	Off	On	On
27	On	On	Off	On	On
28	Off	Off	On	On	On
29	On	Off	On	On	On
30	Off	On	On	On	On
31	On	On	On	On	On

Ordering Information

Model	Description	Stock No.
LED-4410G3	LED Annunciator	3006743