

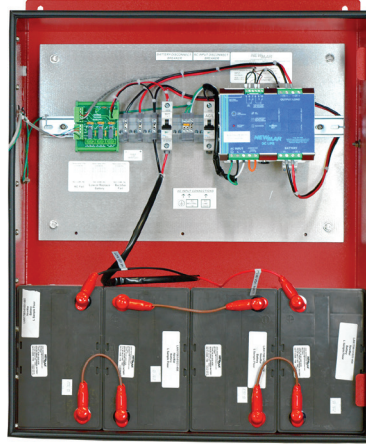
NFPA Compliant Battery Back-Up Power

UL Certified Public Safety/BDA In-Building Coverage

An integral part of an in-building solution for emergency response radio coverage is the backup power system. NFPA codes relating to the autonomous operation and monitoring of the BDA power is quite stringent. These back up power enclosures were engineered to meet every aspect of NFPA 1221 and provide integrators configuration flexibility and rapid delivery directly to site, batteries included.

Features

- Certified to UL 2524 (models w/ UL2524 suffix)
- NFPA compliant
 - All required monitoring alarms
- Batteries included
 - Choose capacity to match system requirements
- NEMA-4 enclosure
- Prewired with waterproof feed-thru's for easy on-site connections



Enclosure A
12, 24, & 48V DC, 18 - 100AH



**Conforms to
UL Standard
2524**

Specifications

Input: 115/230 VAC (factory wired for 120V AC)

Outputs:

DC: 12, 24 and 48V, with 120, 240 and 480 Watt DC UPS

AC: 110V at 96 watts - see reverse for detailed specifications

Protections: Battery breaker, AC input breaker, NEMA enclosure, liquid tight cord grips

NFPA 1221 Compliant Alarms (Form C, Dry Contact)

- AC fail
- Battery discharged to 30% of capacity
- Charger fail

Batteries Included: maintenance free, valve regulated, sealed lead acid, 18, 55, and 100 AH capacity

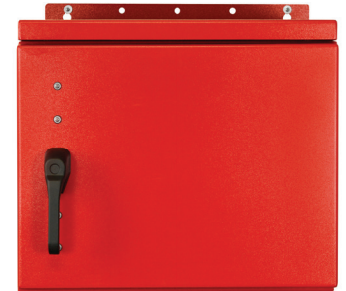
Enclosure Size including Mounting Flanges (H x W x D):

A: 30" x 23" x 10.5"

B: 23.15" x 24" x 24"



Conforms to
UL Standard
2524



Enclosure B
48V, 100AH

Enclosure A: NEMA-4, UL listed, welded aluminum with IP 65 battery vent and locking door, IP-68 cable entries. Red powder coat wall mount.

Enclosure B: NEMA-4, welded aluminum with IP 65 vent, pad lockable door handle, IP-68 cable entries. Red powder coat wall mount.

Model	UL Certified	Output Voltage	DC UPS Power Watts	Batt. A/H Capacity*	System w/ Batt. Wt. (Lbs.)	Shipping Wt. (Lbs.)	Enclosure Size
PE-12V-120W-18AH-UL2524	Yes	12V DC	15.2	18	49	89	A
PE-12V-120W-55AH-UL2524	Yes	12V DC	48.2	55	75	115	A
PE-12V-120W-100AH-UL2524	Yes	12V DC	63.5	100	111	151	A
PE-24V-240W-18AH-UL2524	Yes	24V DC	29.4	18	63	103	A
PE-24V-240W-55AH-UL2524	Yes	24V DC	93.1	55	114	154	A
PE-24V-240W-100AH-UL2524	Yes	24V DC	122.5	100	186	226	A
PE-48V-480W-18AH-UL2524	Yes	48V DC	60	18	90	130	A
PE-48V-480W-55AH-UL2524	Yes	48V DC	200	55	190	230	A
PE-48V-480W-100AH	No	48V DC	480	100	371	411	B
PE-110V-100W-100AH/24V	No	110V AC	96	100	191	231	A

*See reverse for battery specifications

UL: Models ETL Listed to UL Standard 2524



Powering the Network 0519

NFPA Compliant Battery Back-Up Power

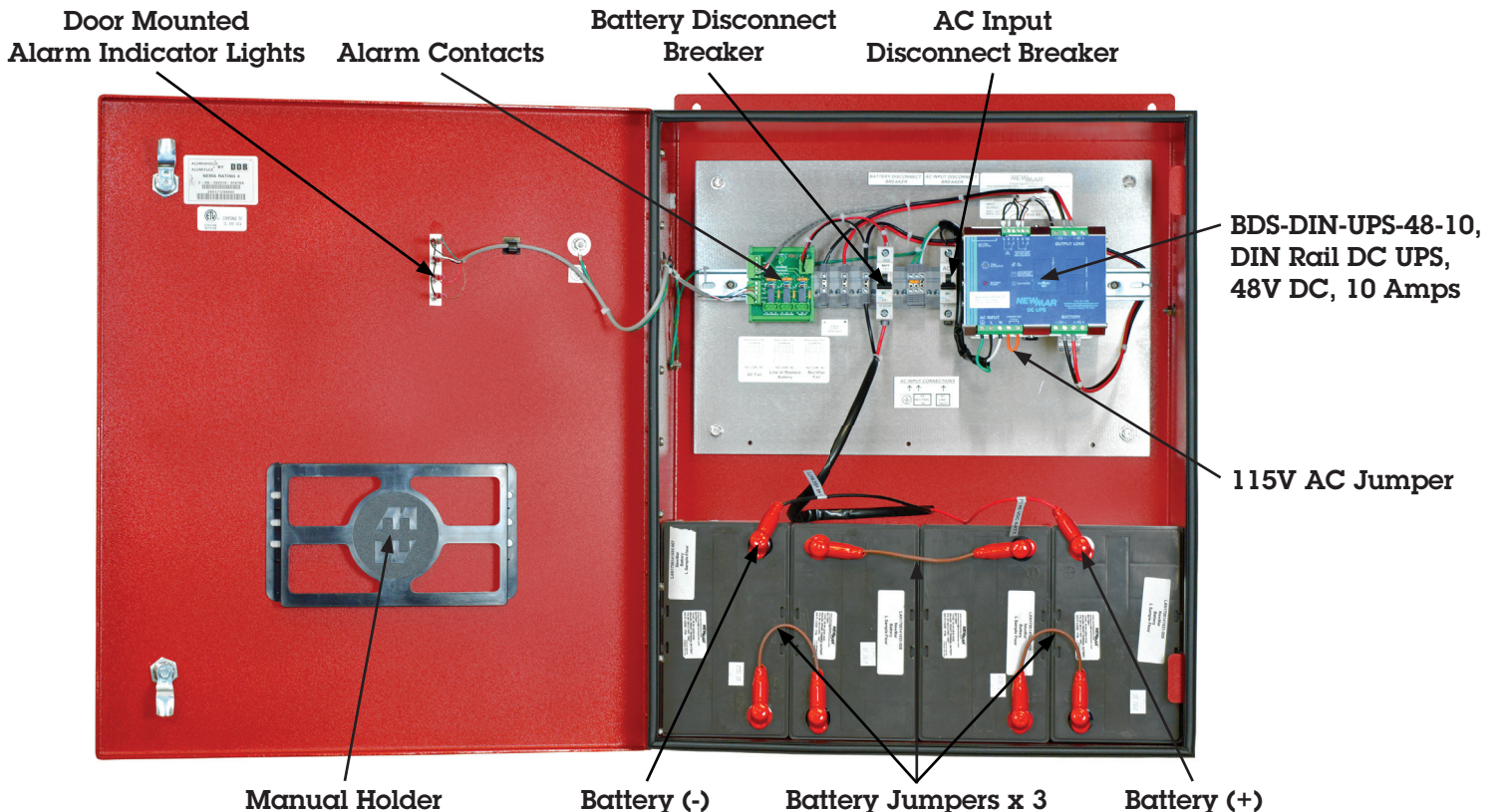
Battery Specifications

Model	Amp/Hour	Battery	Quantity	Max Continuous Load 12 Hour Rating	Max Continuous Load 24 Hour Rating	Electrolyte Content	
						Pounds	Gallons
12V DC							
PE-12V-120W-18AH-UL2524*	18AH-UL2524*	ES17-12S	1	1.2A/15.2W	.75A/9W	1.9	0.3
PE-12V-120W-55AH-UL2524*	55AH-UL2524*	XP12-210FR	1	3.8A/48.2W	2.33A/28W	7.6	0.8
PE-12V-120W-100AH-UL2524*	100AH-UL2524*	PYL12V100FS	1	5A/63.5W	4.6A/55W	22.8	1.6
24V DC							
PE-24V-240W-18AH-UL2524*	18AH-UL2524*	ES17-12S	2	1.2A/29.4W	.75A/18W	3.9	0.6
PE-24V-240W-55AH-UL2524*	55AH-UL2524*	XP12-210FR	2	3.8A/93.1W	2.33A/56W	15.2	1.6
PE-24V-240W-100AH-UL2524*	100AH-UL2524*	PYL12V100FS	2	5A/122.5W	4.6A/110W	45.7	3.2
48V DC							
PE-48V-480W-18AH-UL2524*	18AH-UL2524*	ES17-12S	4	1.2A/60W	.75A/36W	7.7	1.3
PE-48V-480W-55AH-UL2524*	55AH-UL2524*	XP12-210FR	4	4A/200W	2.33A/112W	30.5	3.2
PE-48V-480W-100AH	100AH	PYL12V100FS	4	8.5A/392W	4.6A/221W	91.3	6.3
110V AC							
PE-110V-100W-100AH/24V	100AH/24V	PYL12V100FS	4	N/A	96W	91.3	6.3

Based on 100% duty cycle. Back-up time increase if intermittent duty cycle loads applied.

* Certified to UL 2524 Standards

Typical Wiring Diagram



Huntington Beach, CA USA

Powering the Network

www.poweringthenetwork.com ■ 800-854-3906