

Features

- Connect up to 1000 Potter panels in a single building, local campus, or multiple sites worldwide using LAN/WAN/Internet
- PotterNet-Lite is optimized to monitor one Potter fire panel
- Native Ethernet networking connectivity with fire panels and PotterNet stations, eliminating need for additional hardware, converters, gateways, or network interface cards
- End-to-end supervision of all panels and PotterNet stations
- 300,000 point capacity
- BACnet/IP client for monitoring legacy fire systems
- Customizable floor plans
- Changes update automatically across all PotterNet stations
- Read status on any panel point to view critical settings and current status
- Panel and point control from any PotterNet: Acknowledge, Silence, Reset, Enable, Disable, and Drill
- Flexible licensing and software service agreement provides latest software updates
- Live and recorded mass notification paging
- IntelliView mobile App and web interface options
- Single or multiple monitor support with floatable and dockable windows
- Free demo mode with built-in panel simulator available
- UL 864 Listed Proprietary, Central Station & Remote Station Supervising Station Control Unit (UOJZ) - S735
- Developed, manufactured and supported by Potter in the U.S.A.



FDNY
COA #6315



7165-0328:0517

Description

The PotterNet Fire and Facility Supervising Station is a graphical desktop application that facilitates the monitoring and control of IPA, AFC/ARC, and PFC-4064 fire alarm control panels. It utilizes a distributed client-server model for communication in order to reduce or eliminate single points of failure.

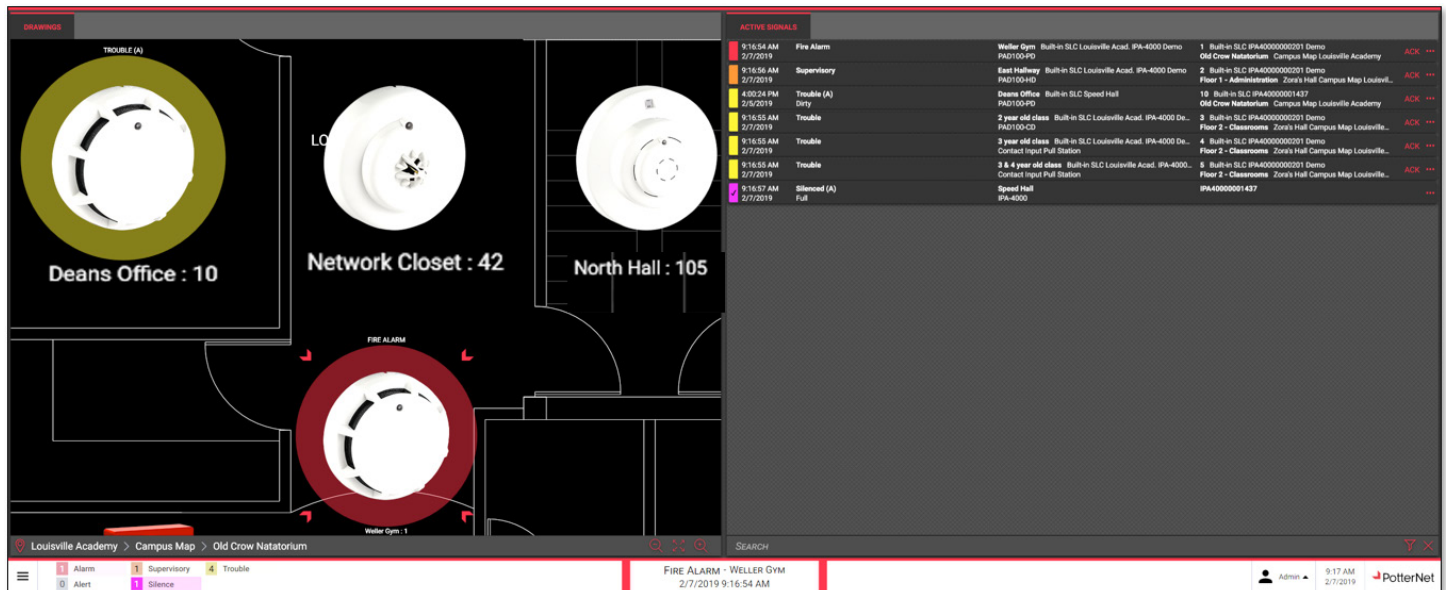
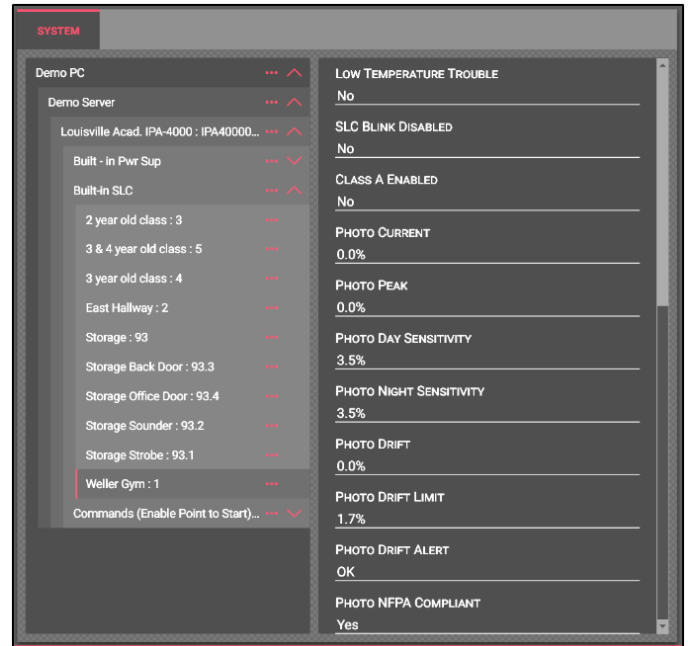
PotterNet will monitor all compatible Potter panels in a single building, on a local campus, or across multiple sites anywhere in the world. Integrated audio will enable mass notification paging. Non-Potter panels can be monitored simultaneously with the built-in BACnet server.

Technical Specifications

PotterNet Stations Per System	15
Networked Panels Per System	1000
History Capacity	3 million signals
File Import Types Required	CAD (DXF), JPG, or PNG
PC & OS Platforms Required	Windows® 10 Professional, 64-bit, English (USA) Intel® i5 (or equivalent) 2.6 GHz, 16GB RAM
Network Technology Requirements	Ethernet with static IPs
Software Requirements	.Net version 4.7.2 MS Visual C++ 2017 Redistributable
Supported Fire Alarm Control Panels	IPA-4000, IPA-100, IPA-60 AFC-1000, AFC-100, AFC-50, ARC-100 PFC-4064, BACnet/IP
Standards	ANSI/UL 864 <ul style="list-style-type: none"> • P (RU) - Proprietary System (Supervising Station Receiving Unit) - PB • CS (RU) - Central Station System (Supervising Station Receiving Unit) - PB • RS (RU) - Remote Station (Supervising Station Receiving Unit) - PB FDNY (COA #6315) CSFM (7165-0328:0517)

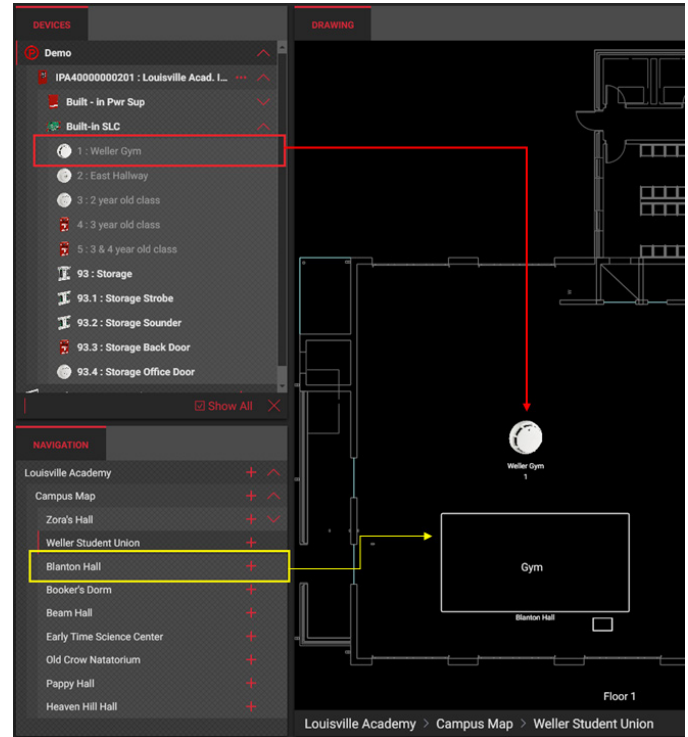
Intuitive User Interface

- Detailed active signals list provides time/date, signal type, signal description, point name, panel name, device type, complete address, and drawing location
- All active signals prioritized and color coded for easy identification
- Icons on drawings show point status, point label, and point address
- Infinite panning and zooming on all drawings
- Hyperlink areas make navigation easy and situation awareness intuitive
- Stations can be individually configured to monitor specific subsets of panels in the system or specific event types
- Drawings navigates to highest priority signal
- Zoom options include: Zoom Drawing Extents, Zoom To Icon, Root Drawing, None
- Signal counters always visible and easy to understand
- Highest priority active signal indicated by zooming chevrons
- Panel and point control from any PotterNet station: Acknowledge, Silence, Reset, Enable, Disable, and Drill
- Control accessible from Drawings, Active Signals tab, or System View (requires AHJ & Potter approval)
- System view provides read status and sensitivity settings for all points on fire panels
- Redundant system for improved survivability via multiple PotterNet stations



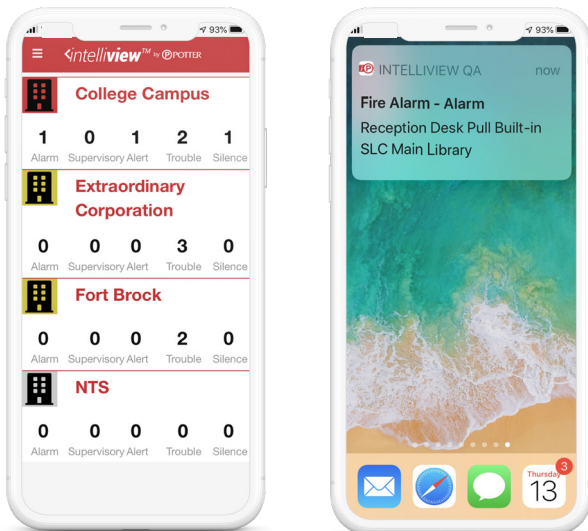
Configuration

- Panels connected and monitored over native Ethernet connection
- All configuration and customization tools included with PotterNet
- Import all panels and points from panel database or directly from panel – no manual entry required
- Graphic floorplan drawings support DXF(CAD), JPG, or PNG
- Standard, custom, and user-defined device icons
- Drag & drop icons onto drawings
- Automated configuration synchronization between all PotterNet stations – make changes once and share among all PotterNet stations
- Configurable drawing background and text colors
- 1000 password-protected users with configurable capabilities
- Supervising Station Receiving Unit and Protected Premises Unit modes for signal handling
- Backup and restore databases for security and technical support
- User approved and enabled remote access allows Potter Technical Support connection via Internet to view and resolve any issues quickly



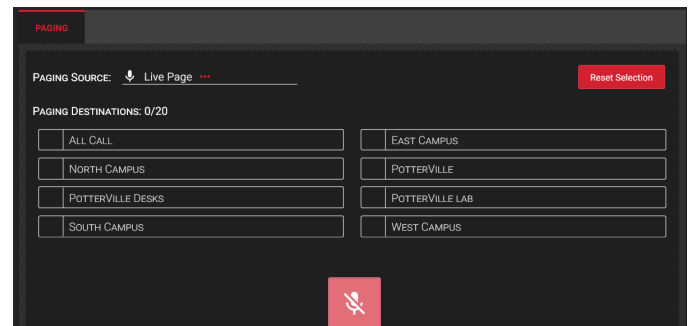
PotterNet with IntelliView Mobile App

- Monitor fire systems from anywhere in the world
- Mobile and web based fire panel signal and status information
- Push notifications of active fire panel signals
- One man walk test with remote panel control from the mobile App
- iOS & Android compatible
- Standard (free) & Premium subscriptions available
- PotterNet systems with an SSA have IntelliView Premium features




Mass Notification Audio

- Live or recorded paging over IP from PotterNet
- Simultaneously page up to 20 locations



History and Reporting

- History logs all fire system and PotterNet activity
- Users can add custom messages to history -- useful for tracking & documenting incidents
- Filter by date, time and signal type
- Sort data by clicking on any column header
- Print report or export to CSV for further editing and formatting
- 3 million signal capacity history with automated or manual backup
- Formatted sensitivity report for all or a subset of monitored panels.
- Formatted detector run time report to identify aging devices



PotterNet Sensitivity Report

Client: Public Safety Office
Report Date: 2/7/2019 4:21 PM

Report Summary

Panel Summary		
Panel Name		
Main Library		
PotterVille Office		
Simulated Potter Panel		
Speed Hall		
Weller		
Zora's Second Floor		

Photo Point Summary		
PanelName	PAD100-PD	PAD100-PHD
Main Library	1	3
PotterVille Office	1	0
Simulated Potter Panel	1	8
Speed Hall	1	0
Weller	1	0
Zora's Second Floor	1	0

Alerts

NFPA Non-Compliant Points						
Panel Name	SLC	Name	Addr.	Type	Drift Limit	Drift
Speed Hall	Built-in SLC	Deans Office	10	PAD100-PD	1.7%	3.5%

Speed Hall

Built-in SLC									
Point Name	Addr.	Type	Day Sens.	Night Sens.	Drift Limit	Drift	Drift Alert	NFPA Compl.	
Deans Office	10	PAD100-PD	3.5%	3.5%	1.7%	3.5%	OK	✗	

Weller

Built-in SLC									
Point Name	Addr.	Type	Day Sens.	Night Sens.	Drift Limit	Drift	Drift Alert	NFPA Compl.	
Gym	4	PAD100-PD	3.5%	3.5%	1.7%	0.0%	OK	✓	

Zora's Second Floor

Built-in SLC									
Point Name	Addr.	Type	Day Sens.	Night Sens.	Drift Limit	Drift	Drift Alert	NFPA Compl.	
Margarita	1	PAD100-PD	3.5%	3.5%	1.7%	0.0%	OK	✓	

System Configurations

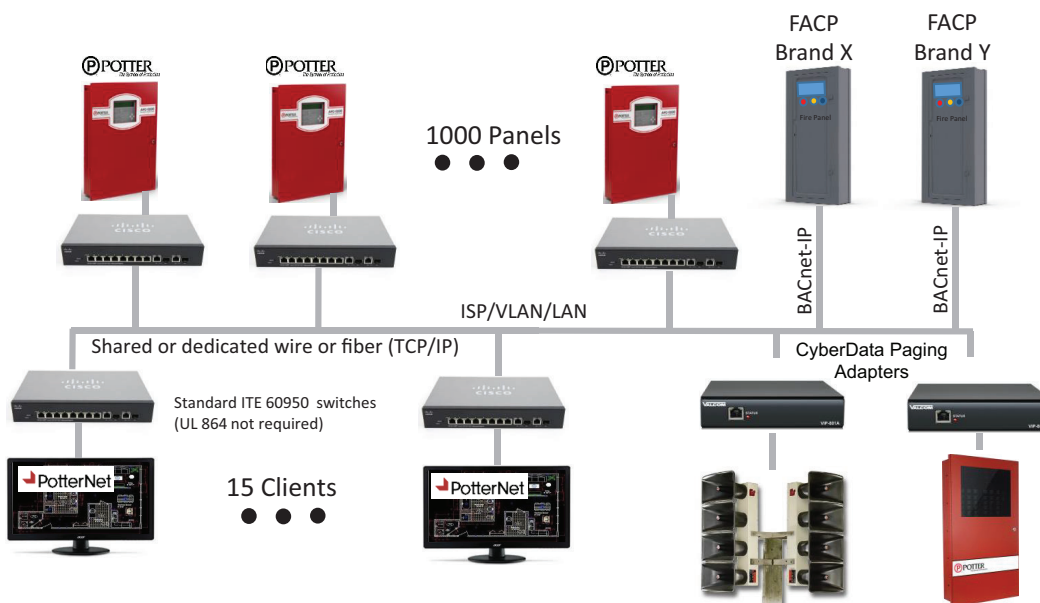
System Architecture

PotterNet is designed to operate on a dedicated or shared TCP/IP (Ethernet, fiber, wireless) network while using minimal communications bandwidth. The end-to-end communications are fully supervised on all network types. With the use of a supervised user connection to the Potter panels, any loss of connectivity is annunciated at the PotterNet station and at the fire alarm control panel. Control functions for this system are not enabled by default in non-UL systems. To activate control requires the approval of the AHJ and Potter. Contact Potter to obtain the necessary indemnity form required for control.

There can be up to 15 PotterNet stations on the system. PotterNet maintains connectivity to the fire system and will annunciate all events. The Potter fire alarm panels, with their standard Ethernet port, require no additional hardware for configuration in a PotterNet network. This saves substantial time and expense.

PotterNet is capable of providing a supplementary reporting interface to non-Potter fire systems. This is done using a BACnet server that is built into PotterNet. All signals and events delivered over BACnet will be displayed on the powerful PotterNet Client user interface. With this interface users can leverage the graphics, signals list, history and other features within PotterNet on non-Potter fire systems.

PotterNet can be installed in a supplementary (non-UL) or UL 864 listed configuration. UL 864 listed applications require the Potter UL listed computer and monitor. In addition, the system must follow the UL required installation requirements outlined in the manuals.



Note: UL 864 systems require UL approved computer and monitor from Potter. IT equipment (switches/routers/etc) do not need to be UL 864 listed but must have standard ITE 60950 listing.

Licensing

- Licenses are purchased through customer service
- PotterLink is the license server and provides a record of all licenses purchased or in use
- PotterNet authenticates with PotterLink on a regular basis
- Off-line codes are available for systems without Internet access
- One year of free software upgrades with PotterNet purchase

(Optional) Software Services Agreement (SSA)

- SSA provides free access to the latest software updates, new features, security patches, and bug fixes

Ordering Information

Model	Description	Stock No.
<i>UL Listed PotterNet</i>		
PotterNet-UL	UL listed PotterNet software license and computer hardware for one PotterNet station. Includes UL listed PC, and UL listed 22" monitor. Each PotterNet station requires a license. 1-year software services agreement (SSA) is included with PotterNet-UL.	3993006
PotterNet-UL-TS	UL listed PotterNet software license and computer hardware for one PotterNet station. Includes UL listed PC, and UL listed 22" touch screen monitor. Each PotterNet station requires a license. 1-year software services agreement (SSA) is included with PotterNet-UL-TS.	3993007
PotterNet-Connect	PotterNet fire panel connection licenses. Each panel connected to PotterNet requires a license. 1-year software services agreement (SSA) is included with PotterNet-Connect.	3993003
<i>Non-UL Listed PotterNet</i>		
PotterNet	Non-UL listed software license for one PotterNet graphical user interface supervising station. (Computer/PC not included). Each PotterNet station requires a license. 1-year software services agreement (SSA) is included with PotterNet.	3993000
PotterNet-Lite	Non-UL listed software for PotterNet graphical user interface supervising station. Limited to monitor 1 Potter fire panel. Includes license to connect to 1 panel. No need to order PotterNet-Connect. (Computer/PC not included). 1-year software services agreement (SSA) is included with PotterNet-Lite.	3993018
PotterNet-Connect	PotterNet fire panel connection licenses. Each panel connected to PotterNet requires a license. 1-year software services agreement (SSA) is included with PotterNet-Connect.	3993003
<i>Mass Notification Audio</i>		
PotterNet-Audio-Connect	PotterNet Audio is a licensed feature in PotterNet that enables a user to send live or recorded pages over IP to an analog paging system/speaker. Requires CyberData 011233 Paging Adapter (purchased separately). Each CyberData Paging Adapter connected to a PotterNet-Audio requires a connection license. 1-year software services agreement (SSA) is included with PotterNet-Audio-Connect.	3993025
<i>Upgrades, Replacement Parts, Demo Mode</i>		
PotterNet-Demo	Limited Demo Software for PotterNet graphical user interface supervising station. (Computer hardware note included). Free to authorized Potter Dealers	3993002
PotterNet-Monitor	22" Monitor UL Listed	3993009
PotterNet-TS-Monitor	22" Touch Screen Monitor UL Listed	3993010
PotterNet-Upgrade	Upgrades PotterNet-Lite to a PotterNet with one Connect license.	3993020
PotterNet-UL-Upgrade	Upgrades existing non-UL PotterNet to UL listed PotterNet supervising station. Includes UL listed PC, and UL listed 22" monitor.	3993011
PotterNet-UL-Upgrade-TS	Upgrades existing non-UL PotterNet to UL listed PotterNet supervising station. Includes UL listed PC, and UL listed 22" touch screen monitor.	3993012
PotterNet-PC-UL	Replacement UL PC	3993013
<i>(Optional) Software Service Agreements (SSA)</i>		
PotterNet-SSA	(Optional) 1-year software services agreement for PotterNet. PotterNet must have an SSA in order to get the software updates. Includes Intelliview mobile app and web Premium features.	3993004
PotterNet-SSA-UL	(Optional) 1-year software services agreement for PotterNet-UL or PotterNet-UL-TS. PotterNet-UL must have an SSA in order to get the software updates. Includes Intelliview mobile app and web Premium features.	3993008
PotterNet-Lite-SSA	(Optional) 1-year software services agreement for PotterNet-Lite. PotterNet-Lite must have an SSA in order to get the software updates.	3993019
PotterNet-Connect-SSA	(Optional) 1-year software services agreement for PotterNet-Connect. Each PotterNet-Connect must have an SSA in order to get the software updates.	3993005
PotterNet-Audio-Connect-SSA	(Optional) 1-year software services agreement for PotterNet-Audio-Connect. Each PotterNet-Audio-Connect must have an SSA in order to get the software updates.	3993026