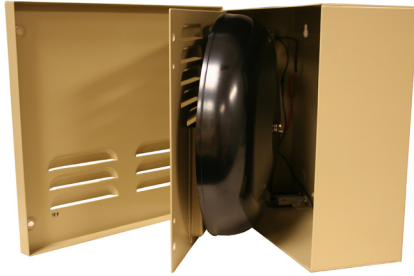


## ABB-1033

### 12VDC MOTOR BELL AND BOX

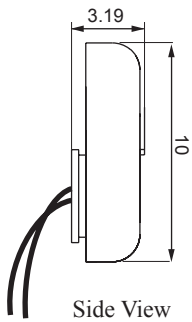


- Low current motor driven bell (60mA at 12V DC)
- 2 reed tamper switches (PSW-1) for outer covers, inner baffle plate, and back of box
- 12V DC operating voltage
- Durable, weather resistant powder coating paint
- Suitable for use with most control panels
- Evenly spaced louvers for a higher sound output
- Exterior color: Beige

Stock number - 4010009

The ABB-1033 box is constructed of steel with a durable beige powder coating finish to prevent corrosion. It operates on 12V DC and draws a low 60mA. The ABB-1033 implements an exclusive low current patented motor driven bell mounted to a removable inner baffle plate and generates a sound output of 85 dB at 10 ft. in the open field. Two reed plunder switches (PSW-1) are designed into the bell box to provide complete tamper protection.

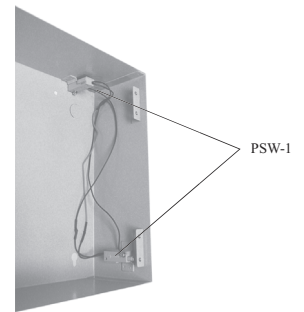
#### Bell Dimensions: inches (mm)



#### Specifications

Operating Voltage	8-17.5V DC
Rated Current at 12V DC	60mA
Sound Output dBA at 10 ft.	85dBA
Starting Voltage	8V DC
Tamper Switch Current	0.3A
Bell Gong Size	10 in.

#### Bell Box Inside view



#### Bell Box Dimensions: inches (mm)

