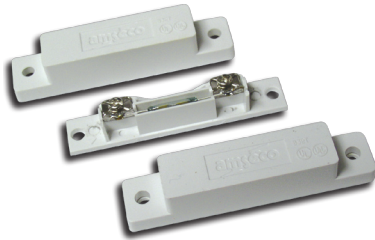


AMS-59 CONCEALED TYPE SURFACE CONTACT

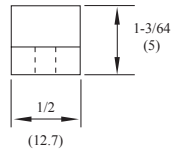
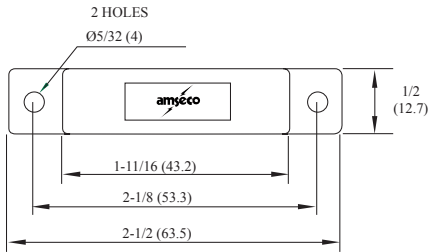


- UL and ULC listed
- 3/4" operating gap
- Unique design to conceal leads
- Available in white, brown, or gray

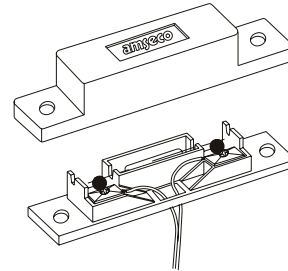
Application

The AMS-59 is a UL listed surface mount contact designed to provide fast, easy, and clean installations. The specially designed housing is also used as the contact's cover to conceal the wiring and deter tampering. The AMS-59 contact can be used to protect openings such as: man doors, sliding doors, windows, cabinets, and hatches.

Dimensions



Installation



Specifications

Model	Color	Stock Number	Contact	Contact Rating	Contact Type	Max. Carry Current	Max. Switching Current	Breakdown Voltage	Operating Gap	Mounting Method
AMS-59	White	4350089	Terminal	10VA	Form A N.O.	1.5 Amp	.5 Amp	350 VDC	3/4"	Screws
	Brown	4350217								