

## Features

- Intuitive software allows easy control of up to 27 INS-PV Potter IntelliPurge® Nitrogen Purge Valves.
- 4X40 LCD display with LED's for Power and Trouble conditions.
- Displays INS-PV operational history.
- Allows scheduled purging for multiple riser systems.
- Key lock and passcode protected.



## Description

The INS-RA is a LCD remote annunciator for the IntelliPurge® Nitrogen System. The INS-RA communicates to up to 27 INS-PV Potter IntelliPurge® Nitrogen Purge Valves using a RS-485 connection. The INS-RA features a LCD display which allows easy control of all INS-PV units on the network. Using an INS-RA, the user can view system status, view operational history, start purge, cancel purge, and refresh N<sub>2</sub> levels remotely. The INS-RA also allows for purge scheduling for nitrogen systems that are connected to more than one fire sprinkler system. The INS-RA will schedule purge process sequentially, allowing the user to purge multiple systems without manually starting and stopping.

## Installation

The INS-RA is connected to the INS-PV units using a three wire RS-485 connection. Up to four (4) INS-RA units can be connected to a single network. See wiring diagram in Figure 1.

### NOTICE

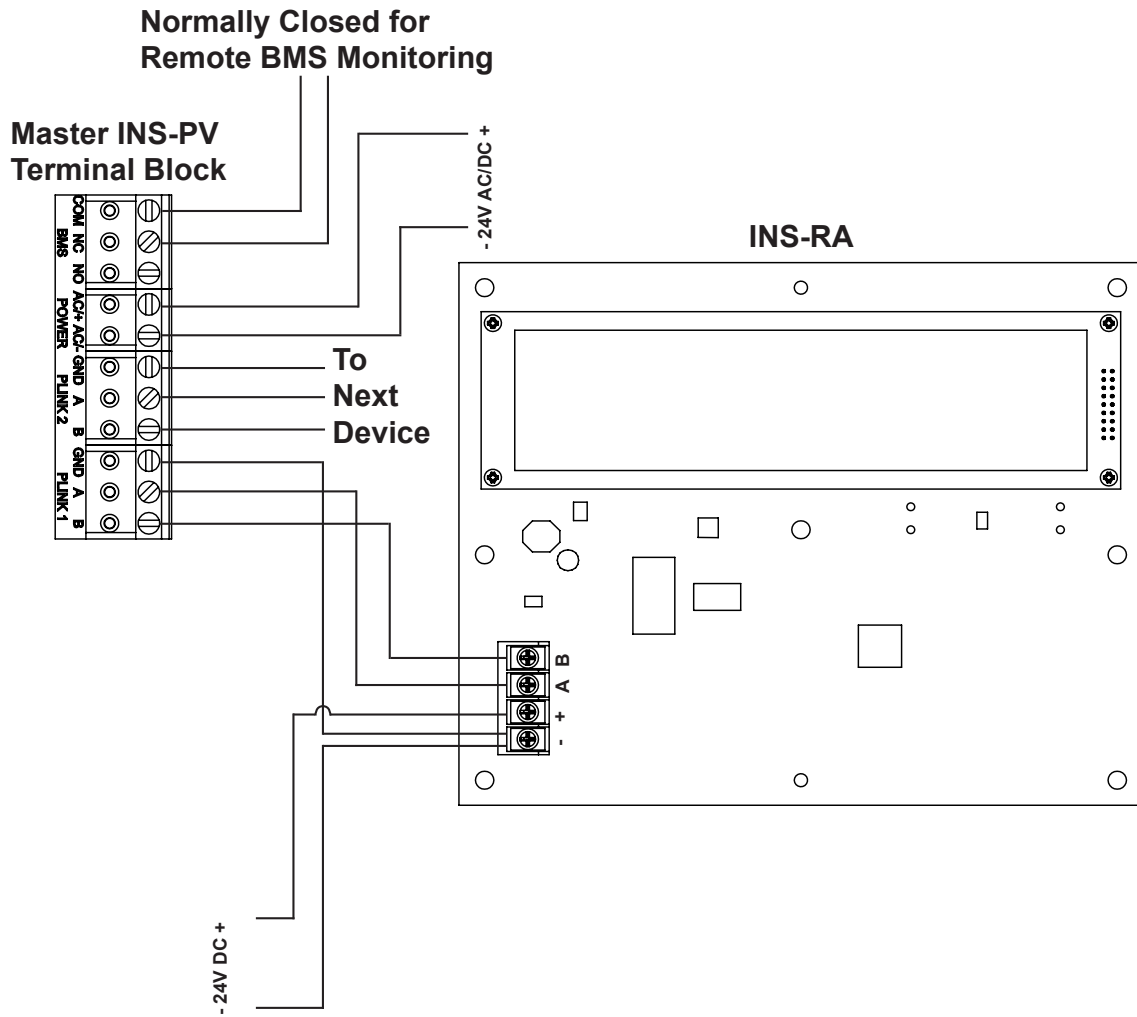
Install in accordance with IntelliPurge® Installation Manual #5401532

## Technical Specifications

Power Requirements	24 Volt DC, 25 mA
Operating Temperature	32°F-120°F (0°C-49°C) 10%-93% @ 86°F (30°C) non-condensing humidity
Maximum INS-RAs (Networked)	4
Size (WxHxD)	10" x 7.875" x 1.625"
Wire Gauge	14 AWG - 22 AWG

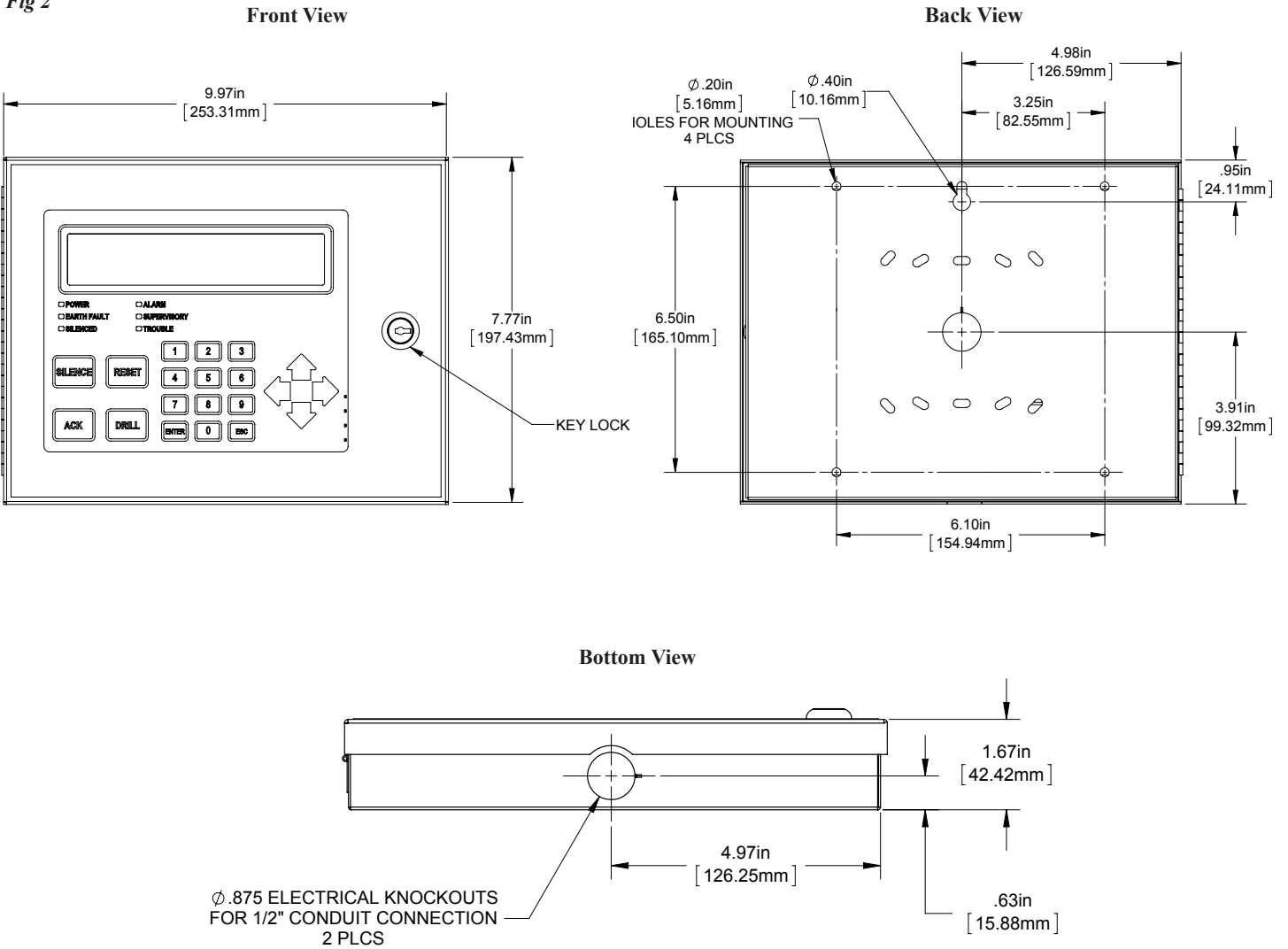
**Wiring Diagram**

Fig 1



**Dimensions**

Fig 2



**Ordering Information**

Model	Description	Stock No.
INS-RA	IntelliPurge® Remote Annunciator	1119476
	Optional Wall Adapter Transformer Regulated at 24VDC, 1A	5270463