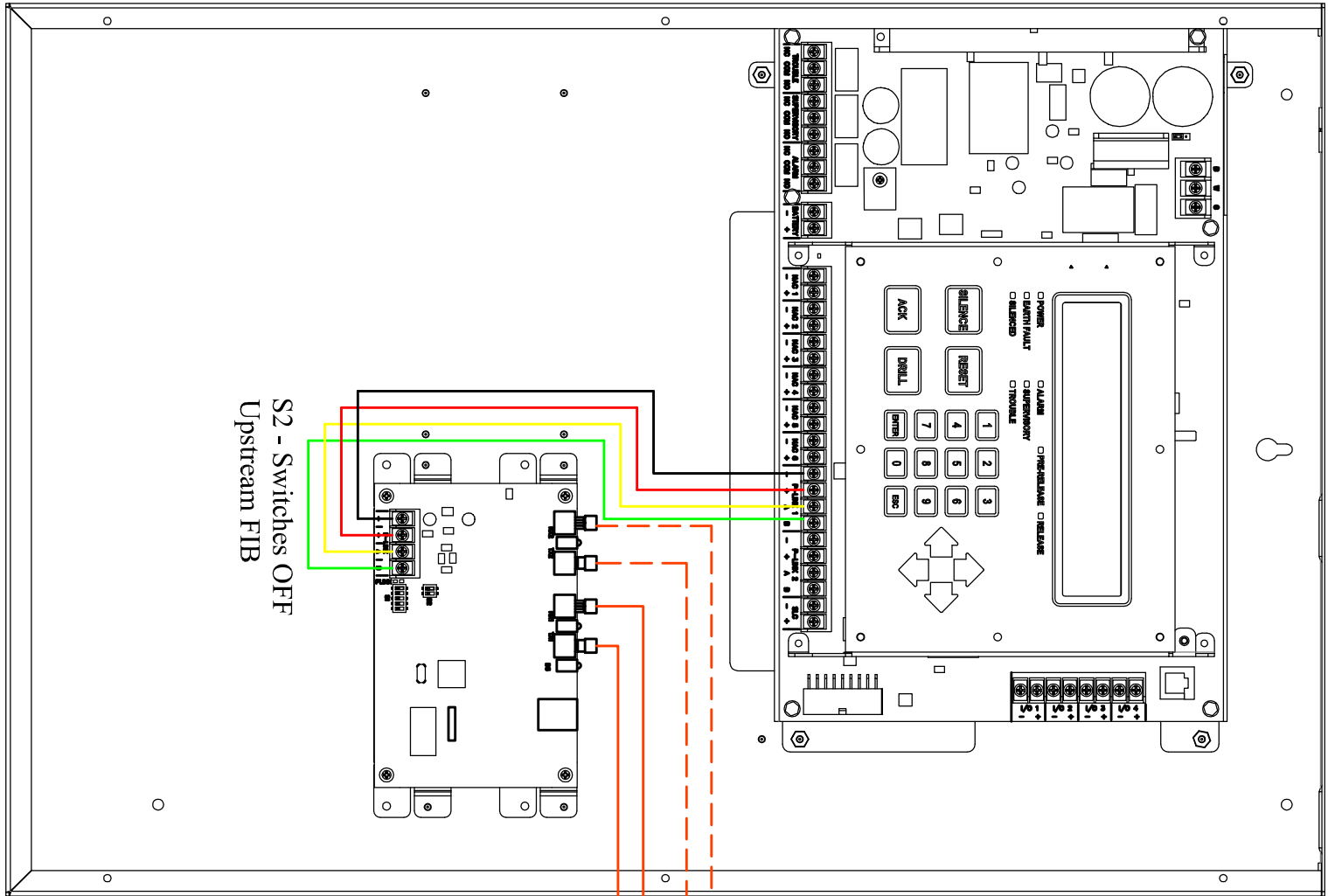
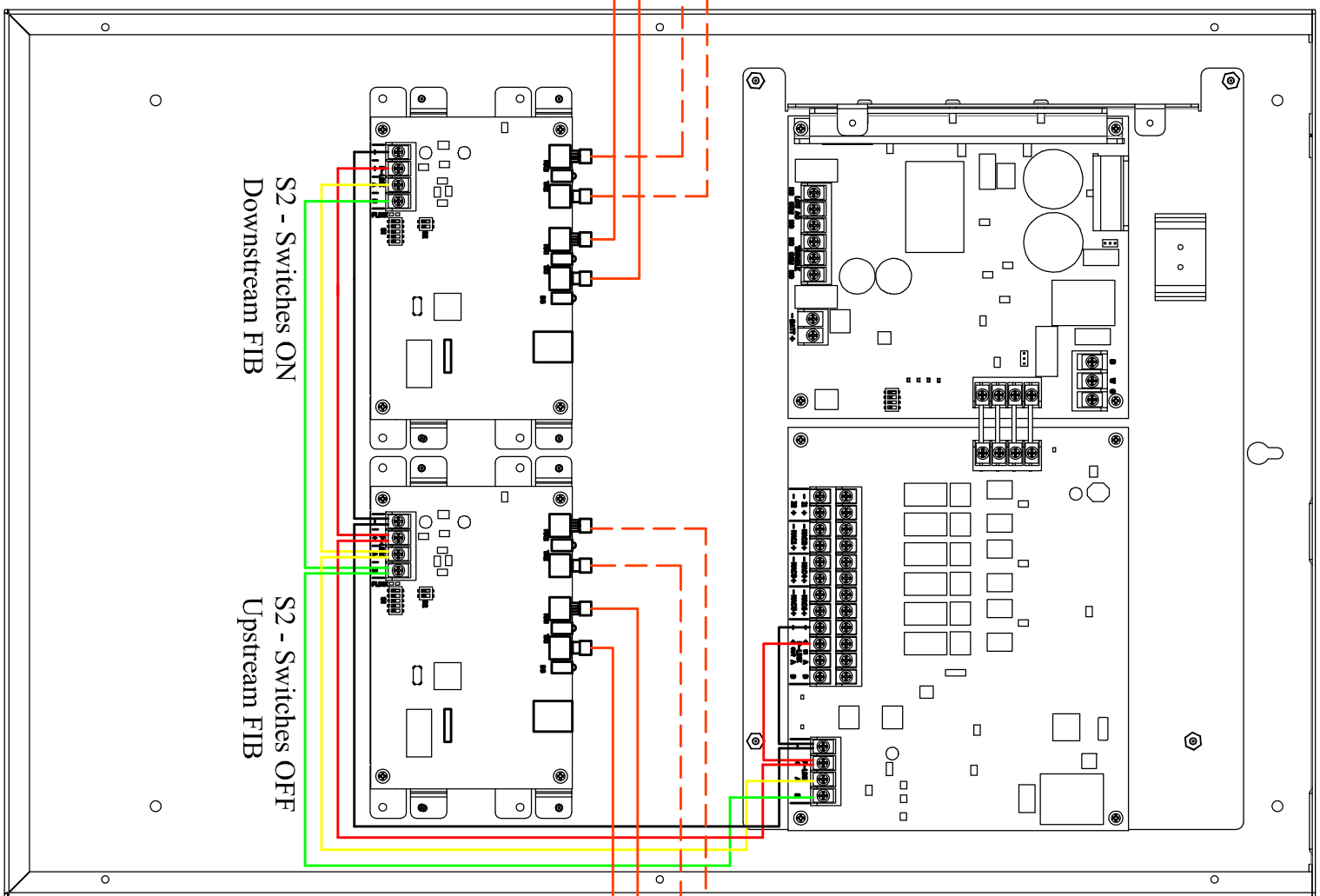


# FIB-1000 Fiber Module Typical Wiring Diagram

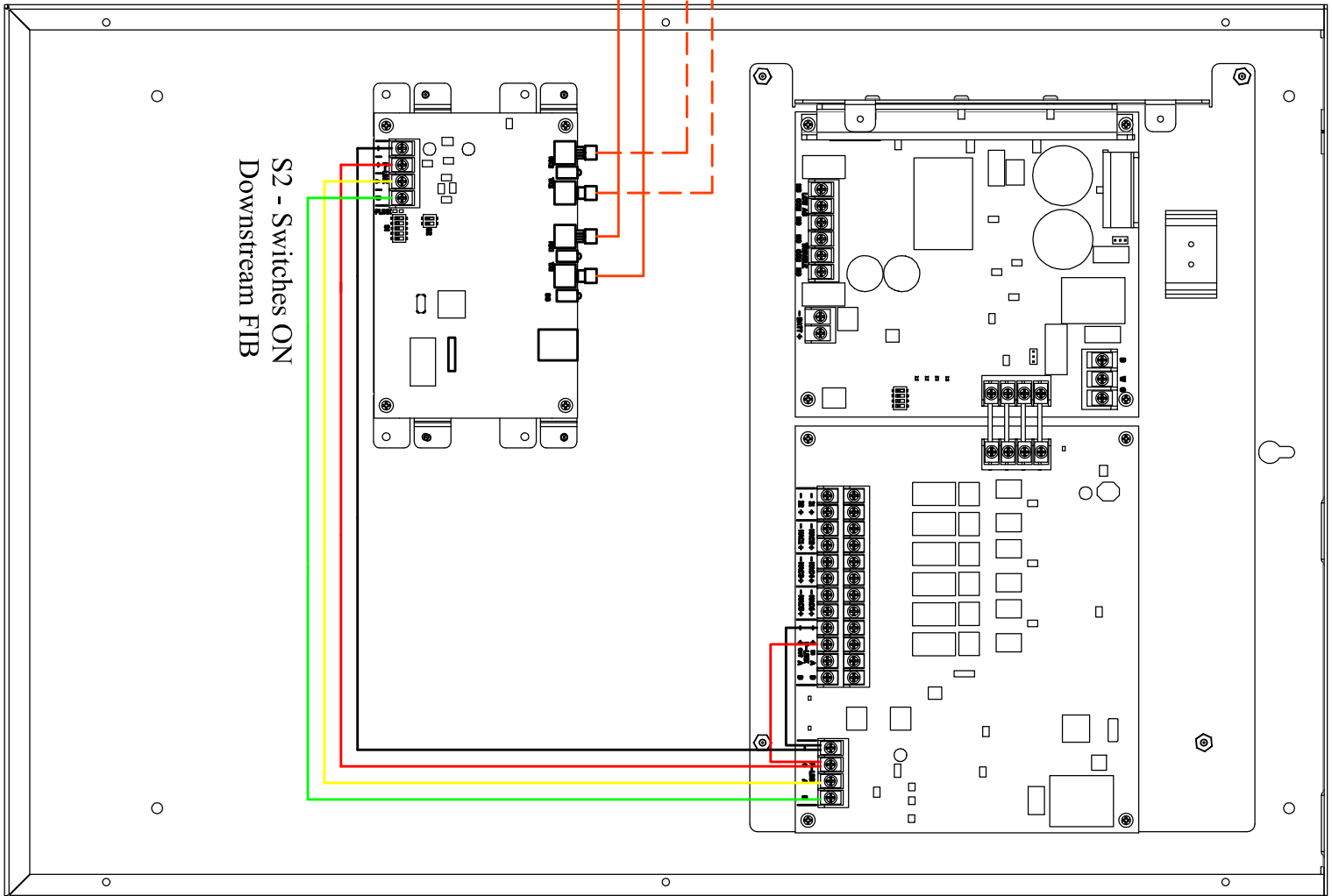
Potter Addressable Fire Alarm Control Panel



Potter PSN-1000E Power Supply



Potter PSN-1000E Power Supply



Optional Class A Fiber Connection

Multimode 62.5/125 Micron Fiber With ST Connectors

Optional Class A Fiber Connection

Multimode 62.5/125 Micron Fiber With ST Connectors

Note:

1. FIB-1000 Fiber modules must be installed in pairs.
2. The maximum number of FIB-1000 modules a panel can support is 30.
3. Each module requires a P-link address set by dip switch S1
4. Dip switch S2 determines if module is upstream or downstream (transmit / receive)
5. The FIB-1000 uses 62.5/125 micron multimode fiber with ST style fiber connectors.