



# AFC Series /

Addressable Fire Alarm Systems

**P** POTTER  
*The Symbol of Protection*

## Addressable Fire Alarm Control Panels /



**AFC-1000**

127 up to 1,270 Addresses  
6 Programmable NACs  
10A Power Supply  
4 I/O Circuits  
Listed for Sprinkler Pre-action and Deluge Systems



**AFC-100**

100 Addresses  
2 Programmable NACs  
5A Power Supply  
2 I/O Circuits  
Listed for Sprinkler Pre-action and Deluge Systems



**AFC-50**

50 Addresses  
2 Programmable NACs  
5A Power Supply  
2 I/O Circuits  
Listed for Sprinkler Pre-action and Deluge Systems



**ARC-100**

100 Addresses  
2 Programmable NACs  
5A Power Supply  
2 I/O Circuits  
Listed for Clean Agent Releasing Systems

## Voice Evacuation /



**AFC-1000V**

Up to 10 amplifiers  
10A Power  
6 Class B, 3 Class A NACs  
NACs rated at 3A each



**FFT-1000**

Fire Fighter Telephone System  
24 Class B or 12 Class A phone circuits  
Expandable up to 96 Class A or 96 Class B phone circuits  
P-Link device



**SCA**

Single Channel  
25W, 50W, and 100W models  
25V or 70V  
Selectable models



**DCA**

Dual Channel  
50W or 100W models  
25V  
70V capable with optional 70V-1000 converter  
Backup amplification using BUA-1000 module

## Conventional Panels /



**PFC-4064**

6 Class B, 3 Class A Zones  
Expandable to 192 Class B, 96 Class A Zones  
5A Power Supply  
4 NAC Circuits rated at 3A each  
Solepath IP Communicator  
Email events & reminders  
Quadrasync Support



**PFC-6006**

6 Zones  
1A Power Supply  
Built-in dual line DACT  
Sole Path IP Communicator  
Email events & reminders



**PFC-4410G3**

Multi-Hazard Capability  
Seven Programmable Class B Initiating Circuits  
Four Class B Output Circuits  
Programmable Cross Zoning including AND/OR capability  
Supervised Microprocessor

## Power Expanders /



**PSN-64/106**

10/6A Power  
4/6 NACs  
Quadrasync Support  
Reference/Variable end-of-line resistor feature



**PSN-1000(E)**

Intelligent Power Expansion  
10A Power  
6 Class B, 3 Class A NACs  
NACs rated at 3A each  
2 addressable input points  
(E) Extra large cabinet to house up to 6 P-Link Expander

## P-Link Circuit /



**FIB-1000**

Fiber Interface Module



**SPG-1000**

Serial Parallel Gateway



**FCB-1000**

Fire Communication Bridge



**DRV-50**

LED Driver Expander



**RLY-5**

Relay Module Expander



**MC-1000**

Multi-Connect Expander



**PAD100-SLCE**

Potter PAD SLC Expander



**IDC-6**

Initiating Device Circuit Expander



**RA-6500R**

160 Character LCD Remote Annunciator



**RA-6075R**

32 Character LCD Remote Annunciator



**LED-16**

LED Remote Annunciator

## SLC Devices /



**PAD300-6DB**

Detector Base



**PAD300-4DB**

Detector Base



**PAD300-SB**

Sounder Base



**PAD300-LFSB**

Low Frequency Sounder Base



**PAD300-IB**

Isolator Base



**PAD300-RB**

Relay Base



**PAD300-PD**

Smoke Detector



**PAD300-DD**

In-Duct Smoke Detector



**PAD300-HD**

Heat Detector



**PAD300-CD**

CO Detector



**PAD300-PHD**

Smoke/Heat Detector



**PAD300-PCD**

Smoke/CO Detector



**PAD-SPKB Series**

Speaker Base

Back Box for PAD-SPKB



**PAD-PCHD Series**

Smoke/Heat/CO Detector



**PAD100-TRTI**

2 Relay 2 Input Module



**PAD100-RM**

Relay Module



**PAD100-ZM**

Zone Module



**PAD100-IM**

Isolator Module



**PAD100-NAC**

NAC Module



**PAD100-LED**

Remote LED Module



**PAD100-SM**

Speaker Module



**PAD100-OROI**

1 Relay 1 Input Module



**PAD100-DIM**

Dual Input Module



**PAD100-SIM**

Single Input Module



**PAD100-MIM**

Micro Input Module



**PAD100-LEDK**

Addressable LED with Key Switch



**PAD300-DUCT**

Duct Detector



**PAD300-DUCTR**

Duct Detector with Relay



**PAD100-DRTS**

Duct Remote Test Switch



**PAD100-PSSA/PSDA**

Single/Dual Action Pull Station

## NAC Devices /



**Mini Horns**



**Horns & Strobes**



**Speakers & Strobes**



**Weather Proof**



**Low Frequency**



**Mass Notification**

# Fire Panel Connections /



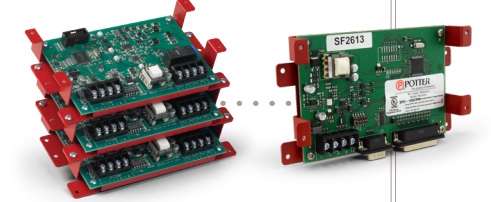
## SLC Loop /



Place expansion cards in-line with your building's existing network cards with rack mounts



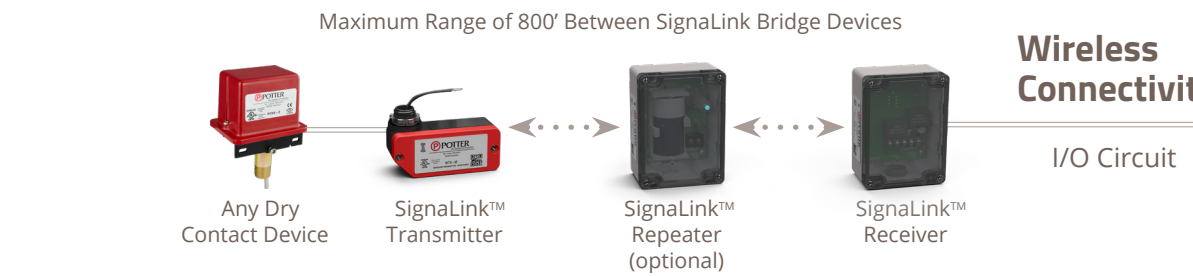
Red, black, gray, or white housing options



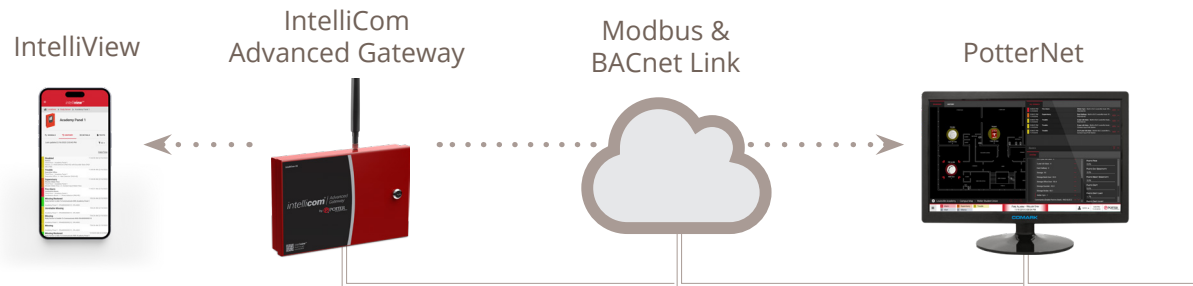
Potter's Stacker Bracket allows for multiple expansion cards to be placed within a cabinet, multiplying the capabilities of your system



Expansion cabinets allow for additional expansion cards



## Wireless Connectivity /



## IP & Network Connectivity /

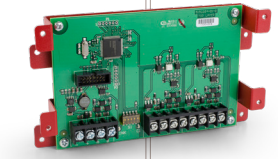


## NAC Circuit /

## P-Link Circuit /

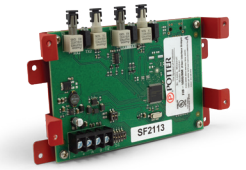


Multi-Connect



MC-1000 allows up to 62 AFC Series, IPA Series, or PFC-4064 panels to share a single reporting technology

P-Link can span up to 6500' between each fire panel and power supply. Greater distances can be achieved with the FIB-1000 and fiber optic cabling.



Up to 31 PSN-1000(E)s can be connected to the P-Link circuit totaling 310 additional amps of synchronized power.

Additional NAC Circuits



x31



**CA-6075**  
Class A Expander  
for IPA-60 and  
IPA-100

**UD-2000**  
Digital Alarm  
Communicator  
Transmitter

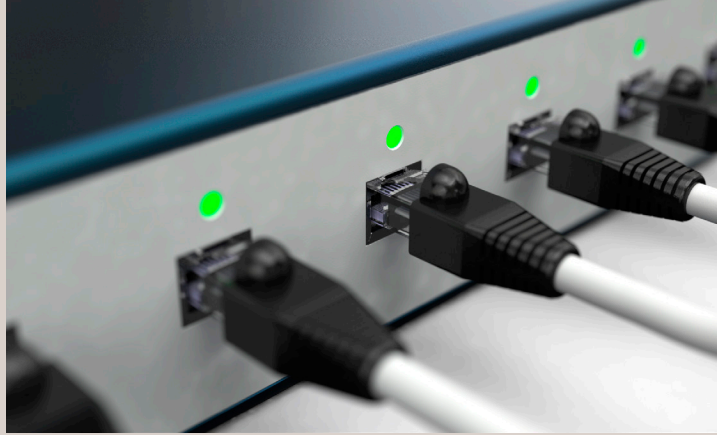
**CA-6500**  
Class A  
Expander  
for IPA-4000



## IP Connectivity /

With today's ever-expanding means of communication, it's important to be able to incorporate the same technology into your fire control system. We took this technology into account when we designed IP connectivity within our new panels.

By eliminating the cost of phone lines, save big when using your building's existing network infrastructure. Additionally, the speed of IP communication allows for event information to be sent to the central station within seconds. Every Potter IP-enabled fire alarm system has an on board IP communicator that is listed to communicate with the SurGard III IP receiver.



## Email & Reminders /

Potter IP-enabled fire alarm systems are email ready. History and Detector Status reports can be sent on demand as either a text or Excel® file for a professional look. The status events of the panel can be immediately emailed allowing users to be proactive in servicing customers.

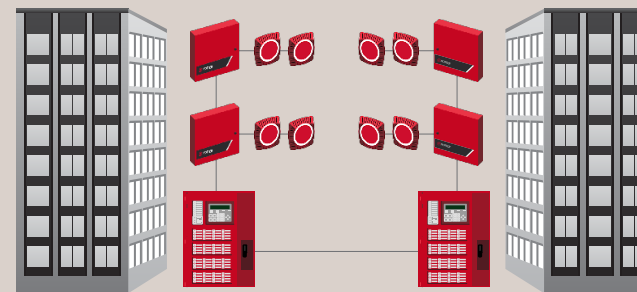
Reports and the configuration file can be requested from the panel at any time by sending an email directly to the panel. Additionally, enhance your business by creating email reminders for your customers to schedule system tests or even to purchase new batteries.

## Potter's Integrated Voice Systems /

Potter's integrated voice systems bring a new level of software sophistication to an already world-class line of hardware—enabling safe, dependable evacuation during emergency events. With innovative features like WaveNet text-to-speech and visual audio patterns, systems can be rapidly deployed without hassle and added costs. Our emergency voice communication systems can tackle any sized job with industry leading capacity including up to 104 programmable push buttons, 31 total system amplifiers, 248 speaker circuits, and much more!

Learn more by visiting:

[ptr.us/integrated-voice](http://ptr.us/integrated-voice)



## Amplifiers for Integrated Voice /

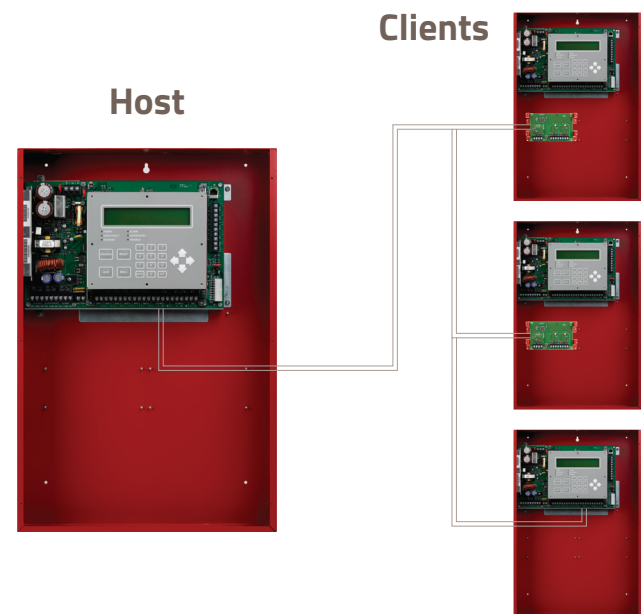
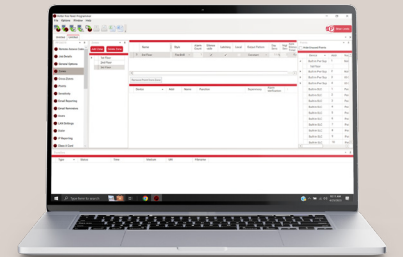
Potter provides a large selection of single and dual channel amplifiers to support small, medium, and hi-rise applications. With available wattages up to 100W and support for both 25VRMS and 70VRMS output voltages, you can be sure that your integrated voice system can adapt to nearly any project. With up to 31 amplifiers per system and an industry leading 8 speaker circuits per amplifier, our systems are truly unmatched in size and capacity. Additionally, dual channel amplifiers can simultaneously instruct evacuation zones and alert other zones of potential emergency, saving the need for multiple amplifiers.

## Panel Programming /

Once connected to a network, the panel configuration software allows custom programming and configuration for all points using the network or a stand-alone computer. Fine-tune device behavior characteristics or create mapping zones for a more sophisticated fire protection system. All this is bundled in an easy-to-use drag and drop interface.

Learn more by visiting:

[ptr.us/panel-programming](http://ptr.us/panel-programming)

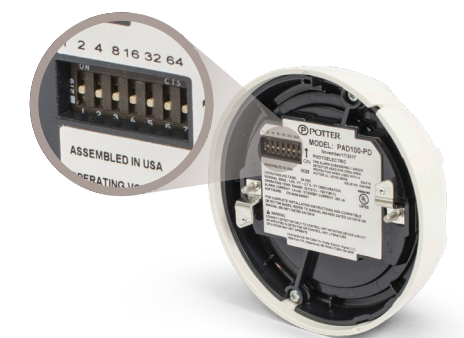
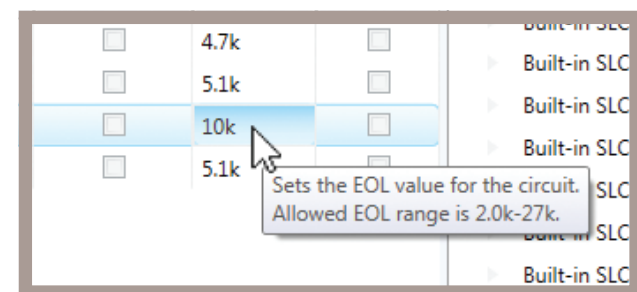


## Multi-Connect /

The MC-1000 Multi-Connect Module allows up to 62 client fire panels to communicate with a remote/central station through a single control panel designated as the host. This can eliminate the need for multiple phone lines and monitoring accounts. Each MC-1000 module includes terminal connections for two client panels.

## Designed & Assembled in the USA /

Potter prides itself on offering a full line of fire alarm equipment assembled in St. Louis, Missouri and Branford, Connecticut. With engineering teams located in Maple Grove, Minnesota; Moline, Illinois; and Louisville, Kentucky; Potter continues to provide the latest innovations direct from America's heartland.



## Programmable EOLs /

NACs and I/Os have programmable EOLs between 2.0k and 27k. This can be achieved manually by installing the resistor and using the panel's LEARN function, or automatically through the programming software.

## Dipswitch Programming /

Potter Protocol devices are now programmed through easy-to-use dip-switches. This makes it easier than ever to address SLC devices on-site and requires no external hardware.

Potter AFC Series Comparison Charts\*

| Features   | Potter AFC-1000                   | Fire-Lite ES200X                      | Silent Knight 6808         | Fire-Lite ES1000X                     | Silent Knight 6820                                 |
|--|-----------------------------------|---------------------------------------|----------------------------|---------------------------------------|--|
| Addressable SLCs   | 10 (Class A or B)                 | 1 (Class A or B)                      | 1 (Class A or B)           | 3 (Class A or B)                      | 4 (Class A or B)                                   |
| SLC Points   | 1,270                             | 198 <sup>6</sup>                      | 127/198 <sup>3,6</sup>     | 954                                   | 635/1110 <sup>3,6</sup>                            |
| Max SLC Loop Distance  | 10,000 ft                         | 10,000 feet                           | 12,500 feet                | 10,000 feet                           | 10,000 feet  |
| SLC Protocol   | Potter® PAD / Nohmi® <sup>7</sup> | Fire-Lite®                            | Hochiki® / SK <sup>3</sup> | Fire-Lite®                            | Hochiki® / SK <sup>3</sup>                         |
| NAC Power Supply (Amps)  | 10                                | 3                                     | 6                          | 8                                     | 6  |
| # of NACs  | 6 NACs Class A/B, 4 I/O Class B   | 4 Class A/B                           | 2 Class A, 4 Class B       | 4 NACs Class A/B                      | 3 Class A, 6 Class B, 1 I/O Class A, 2 I/O Class B |
| NAC Circuit Rating   | 3A each, I/O 1A each              | 2.5 amp each                          | 3 amp each                 | 3 amps each                           | 3 amps each  |
| On-Board Programmable I/O <sup>4</sup>   | 4                                 | 0                                     | 0                          | 0                                     | 2  |
| E-mailing Capabilities <sup>5</sup>  | Built-In                          | No                                    | No                         | No                                    | No   |
| IP Communicator  | Included                          | Built-in                              | Built-in                   | Built-In                              | Built-in   |
| On-board Alarm, Supervisory, & Trouble Relays  | Yes                               | 1 Trouble, 2 Programmable             | 1 Trouble, 2 Programmable  | 1 Trouble, 2 Programmable             | 1 Trouble, 2 Programmable                          |
| Digital Alarm Communicator   | Optional                          | Built-in                              | Built-in                   | Built-In                              | Built-in   |
| Reporting Protocol   | General, Zone, Point              | Point or Zone                         | Point or Zone              | Point or Zone                         | Point or Zone                                      |
| Remote Upload/Download   | Yes                               | Yes                                   | Yes                        | Yes                                   | Yes  |
| History Buffer   | 4,000                             | 1,000                                 | 500                        | 1,000                                 | 1,000  |
| Sync Capabilities  | Quadrasync <sup>1</sup>           | Selectable <sup>2</sup>               | Selectable <sup>2</sup>    | Selectable <sup>2</sup>               | Selectable <sup>2</sup>                            |
| Auto Programming   | Yes                               | Yes                                   | Yes                        | Yes                                   | Yes  |
| Auto Programming finds /adds / deletes / device-type changes without affecting installed program | Yes                               | Finds/Adds Only                       | Finds/Adds Only            | Finds/Adds Only                       | Finds/Adds Only                                    |
| Programming Zones  | 1,500                             | 125                                   | 256                        | 99                                    | 999  |
| Programming Port Cable   | Standard Ethernet                 | Remote Via Ethernet Locally using USB | USB or Ethernet            | Remote Via Ethernet Locally using USB | USB or Ethernet                                    |
| Annunciators   | 31                                | 16                                    | 12                         | 16                                    | 16   |
| Battery Size in Cabinet (x2)   | 18                                | 18                                    | 18                         | 26                                    | 18   |
| Battery Charging Capability  | 55                                | 18                                    | 35                         | 55                                    | 35   |

| Features   | Potter AFC-50 / Potter AFC-100    | Fire-Lite ES-50X                     | Silent Knight 6700             |
|--|-----------------------------------|--------------------------------------|--------------------------------|
| Addressable SLCs   | 1 (Class A or B)                  | 1 (Class A or B)                     | 1 (Class B) / 1 (Class A or B) |
| SLC Points   | 50 / 100                          | 50                                   | 50 / 100 <sup>3</sup>          |
| Max SLC Loop Distance  | 10,000 feet                       | 10,000 feet                          | 12,500 feet                    |
| SLC Protocol   | Potter® PAD / Nohmi® <sup>7</sup> | Fire-Lite®                           | Hochiki®, SK <sup>3</sup>      |
| Power Supply (Amps)  | 5                                 | 3                                    | 2.5                            |
| # of NAC   | 2 NACs Class A/B, 2 I/O Class B   | 2 Class or 2 Class B                 | 1 Class A or 2 Class B         |
| NAC Circuit Rating   | 3 amps each                       | 2.5 amps each                        | 2.5 amps each                  |
| Emailing Capabilities <sup>5</sup>   | Built-in                          | No                                   | No                             |
| IP Communicator  | Included                          | Built-in                             | Built-in                       |
| On-board Programmable I/O <sup>4</sup>   | 2                                 | 0                                    | 0                              |
| On-board Alarm, Supervisory, & Trouble Relays  | Yes                               | 1 Trouble, 2 Programmable            | 1 Trouble, 2 Programmable      |
| Dialer   | Optional                          | Built-in                             | Built-in                       |
| Reporting Protocol   | General Point or Zone             | Point or Zone                        | Point or Zone                  |
| Remote Upload/Download   | Yes                               | Yes                                  | Yes                            |
| History Buffer   | 4,000                             | 1000                                 | 1000                           |
| Sync Capabilities  | QuadraSync <sup>1</sup>           | Selectable <sup>2</sup>              | Selectable <sup>2</sup>        |
| Auto Programming   | Yes                               | Yes                                  | Yes                            |
| Auto Programming finds/adds/deletes/ device-type changes without affecting installed program | Yes                               | Finds Adds Only                      | Finds Adds Only                |
| Programming Zones  | 99                                | 50                                   | 125                            |
| Programming Port Cable   | Standard Ethernet                 | Remote via Ethernet Locally with USB | Standard Ethernet or USB       |
| Annunciators   | 31                                | 8                                    | 8                              |
| Battery Size in Cabinet (x2)   | 18                                | 18                                   | 7                              |
| Battery Charging Capability  | 55                                | 18                                   | 35                             |

\* Content based on available published information.

1. QuadraSync allows user to set each NAC circuit to a different sync protocol and maintain system wide sync. (Amseco®, Wheelock®, Gentex®, System Sensor®)
2. Selectable allows user to set sync protocol for all NAC outputs (Amseco®, Gentex®, Wheelock®, System Sensor®) Fire-Lite ES-50X, ES200X, and ES-1000X do not support Amseco synchronization protocol.
3. Panel accepts multiple protocols. Smaller number refers to Hochiki protocol and larger number refers to SK protocol
4. I/O circuits can be programmed as NAC, AUX PWR, Contact Input, City Tie, Reverse Polarity.
5. Emailing Capabilities: panel has built-in email functionality to notify user-defined email addresses of events occurring at the panel. Scheduled reports can be emailed from panel, and reports can be requested from the panel on-demand.
6. The total of 198 is made up of a maximum of 99 detectors and 99 modules each per loop.
7. Same SLC protocol devices are used on all Potter AFC panels.