



IPA Series /

Addressable Fire Alarm Systems



Addressable Fire Panels /



IPA-4000
127 up to 4,064 Addresses
6 Programmable NACs
10A Power Supply
4 I/O Circuits
4 x 40 LCD display
Listed for both Water and Chemical (Agent) releasing
UUKL Listed for Smoke Control
Spanish and Portuguese versions available



IPA-4000E
127 up to 4,064 Addresses
6 Programmable NACs
10A Power Supply
4 I/O Circuits
4 x 40 LCD display
Listed for both Water and Chemical (Agent) releasing
UUKL Listed for Smoke Control
Optional PSK-1000B or SCUI-1000B for integrated programmable soft keys or smoke control zones



IPA-100
127 Addresses
2 Programmable NACs
5A Power Supply
2 I/O Circuits
4x20 LCD Display
Listed for both Water and Chemical (Agent) releasing
UUKL Listed for Smoke Control
Spanish and Portuguese versions available



IPA-60
60 Addresses
2 Programmable NACs
5A Power Supply
2 I/O Circuits
4x20 LCD Display
Listed for both Water and Chemical (Agent) releasing
UUKL Listed for Smoke Control
Spanish and Portuguese versions available

Voice Evacuation /



IPA-4000V
IPA EXCLUSIVE- WaveNet Text-To-Speech audio messages
Up to 31 amplifiers
Industry leading 8 speaker circuits per amplifier for up to 248 total Class B or Class A circuits
4 x 40 LCD display



LOC-1000
Local Operator Console
Control the system from remote areas
Programmable ACU and LOC prioritization to grant control to panels with highest priority
Equipped with microphone
4 x 40 LCD display



FFT-1000
Fire Fighter Telephone System
24 Class B or 12 Class A phone circuits
Expandable up 96 Class A or 96 Class B phone circuits
P-Link device



SCA/DCA
Single or Dual Channel
50W (single) or 100W models
25V
70V capable with optional 70V-1000 converter
Backup amplification using BUA-1000 module



SCA-5070INT
Small-form
50W single channel amp
Can be installed in existing cabinets



RM-1000ECS
Remote microphone with eight (8) soft keys
Equipped with microphone
Remote microphone prioritization using Potter Fire Programmer
P-Link device

Conventional Panels /



PFC-4064
6 Class B, 3 Class A Zones
Expandable to 192 Class B, 96 Class A Zones
5A Power Supply
4 NAC Circuits rated at 3A each
Solepath IP Communicator
4 x 20 LCD display
Email events & reminders
Quadrasync Support



PFC-6006
6 Zones
1A Power Supply
1 NAC Circuit rated at 0.5A
Built-in dual line DACT
Sole Path IP Communicator
2 x 16 LCD display
Email events & reminders




PFC-4410G3
Multi-Hazard Capability
Seven Programmable Class B Initiating Circuits
Four Class B Output Circuits
Programmable Cross Zoning including AND/OR capability
4 x 20 LCD display
Supervised Microprocessor

Power Expanders /




PSN-64/106
10/6A Power
4/6 NACs
Quadrasync Support
Reference/Variable end-of-line resistor feature




PSN-1000(E)
Intelligent Power Expansion
10A Power
6 Class B, 3 Class A NACs
NACs rated at 3A each
2 addressable input points
(E) Extra large cabinet to house up to 6 P-Link Expander


P-Link Circuit and Accessories /




FIB-1000
Fiber Interface Module




SPG-1000
Serial Parallel Gateway




DRV-50
LED Driver Expander




RLY-5
Relay Module Expander




PSK-1000
Programmable Soft Keys




SCUI-1000
Smoke Control User Interface



MC-1000
Multi-Connect Expander




PAD100-SLCE
Potter PAD SLC Expander




IDC-6
Initiating Device Circuit Expander




RA-6500R, RA6075R
160 or 32 Character LCD Remote Annunciator



LED-16
LED Remote Annunciator



GTSA-7
7" Touchscreen Annunciator



CA-6075 & CA-6500
Class A Expanders

Addressable Devices /



PAD300-6DB
Detector Base



PAD300-4DB
Detector Base



PAD300-SB
Sounder Base



PAD300-LFSB
Frequency Sounder Base



PAD300-IB
Isolator Base



PAD300-RB
Relay Base



PAD300-PD
Smoke Detector



PAD300-DD
In-Duct Smoke Detector



PAD300-HD
Heat Detector



PAD300-CD
CO Detector



PAD300-PHD
Smoke/Heat Detector



PAD300-PCD
Smoke/CO Detector



PAD-SPKB Series
Speaker Base
LFSBB-W
Back Box for PAD-SPKB



PAD-PCHD Series
Smoke/Heat/CO Detector



PAD100-TRTI
2 Relay 2 Input Module



PAD100-RM
Relay Module



PAD100-ZM
Zone Module



PAD300-IM
Isolator Module



PAD100-NAC
NAC Module



PAD100-LED
Remote LED Module



PAD100-SM
Speaker Module



PAD100-OROI
1 Relay 1 Input Module



PAD100-DIM
Dual Input Module



PAD100-SIM
Single Input Module



PAD100-MIM
Micro Input Module



PAD100-LEDK
Addressable LED with Key Switch



PAD300-DUCT
Duct Detector



PAD300-DUCTR
Duct Detector with Relay



PAD100-DRTS
Duct Remote Test Switch



PAD100-PSSA/PSDA
Single/Dual Action Pull Station

Conventional Devices /



PC-2P6B
Smoke Detector with 6 inch base



PC-2PN6B
Smoke Detector without Magnetic Test with 6 inch base



PC-2H6B
Smoke Detector with 6 inch base



PC-2PH6B
Smoke/Heat Detector with 6 inch base



PC-RA
Remote Indicator

NAC Devices /



PE-HN/HS/ST Series
Horns & Strobes



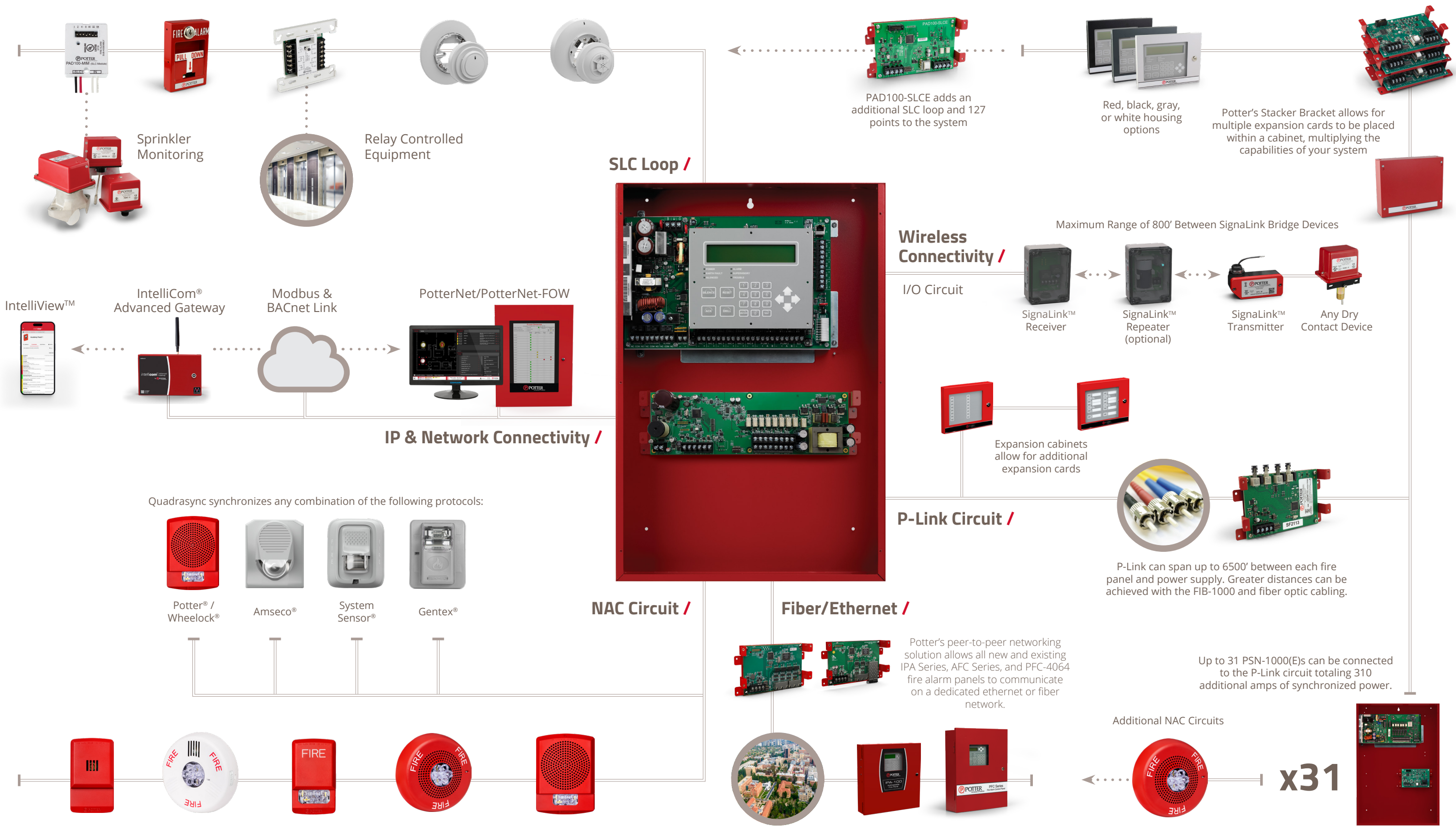
PE-SPK/SPST
Speakers and Speaker Strobes



PE-FLHN/LFHS Series
Low Frequency Sounders and Sounder Strobes



Fire Panel Connections /



Connectivity That Works as Hard as Your System /

The IPA Series doesn't stop at protection — it connects, reports, and adapts. Backed by a full suite of powerful connectivity solutions, Potter gives you real-time control, enterprise insight, and seamless integration with building systems across any environment.

The IPA Connectivity Ecosystem /

▪ IntelliCom™

Potter's 5G-ready, multi-carrier gateway for modern alarm communication. Supports AT&T, T-Mobile, and Verizon. No dialers. No signal loss. Just fast, code-compliant transmission.

▪ IntelliView™

Secure cloud-based monitoring and remote access. View system status, receive real-time alerts, and make configuration changes — without a truck roll.

▪ PotterNet™

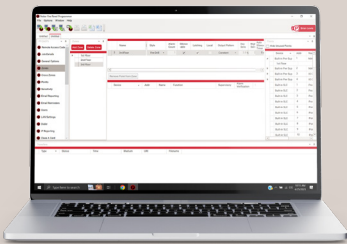
Enterprise-level fire system management across large campuses or multiple facilities. Graphical interface, system mapping, and unified control — all in one intelligent interface.

▪ BACnet® and Modbus® Integration

Out-of-the-box compatibility with building automation systems. Share real-time fire system data with HVAC, security, and BMS platforms — no additional gateway required.

▪ Panel Programming

Once connected to a network, the panel configuration software allows custom programming and configuration for all points using the network or a stand-alone computer. Fine-tune device behavior characteristics or create mapping zones for a more sophisticated fire protection system. All this is bundled in an easy-to-use drag and drop interface.

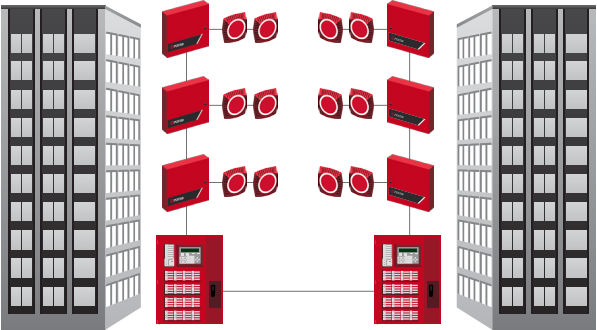


Potter's Integrated Voice Systems /

Potter's integrated voice systems bring a new level of software sophistication to an already world-class line of hardware—enabling safe, dependable evacuation during emergency events. With innovative features like WaveNet text-to-speech and visual audio patterns, systems can be rapidly deployed without hassle and added costs. Our emergency voice communication systems can tackle any sized job with industry leading capacity including up to 104 programmable push buttons, 31 total system amplifiers, 248 speaker circuits, and much more!

Learn more by visiting:

pttr.us/integrated-voice



Amplifiers for Integrated Voice /

Potter provides a large selection of single and dual channel amplifiers to support small, medium, and hi-rise applications. With available wattages up to 100W and support for both 25VRMS and 70VRMS output voltages, you can be sure that your integrated voice system can adapt to nearly any project. With up to 31 amplifiers per system and an industry leading 8 speaker circuits per amplifier, our systems are truly unmatched in size and capacity. Additionally, dual channel amplifiers can simultaneously instruct evacuation zones and alert other zones of potential emergency, saving the need for multiple amplifiers.

GTSA-7 Touchscreen Annunciator /

The GTSA-7 is a 7" full-color touchscreen annunciator designed for public-facing spaces that demand both visual clarity and code-compliant fire alarm control. Engineered to operate as a network node, it connects via Ethernet and 24 VDC power — independent of P-Link — and houses its own network card when required by remote applications.

- 7" color touchscreen with customizable "System Normal" image
- Surface or flush mount, with red or black enclosure options
- Ethernet-connected network node
- ACK, Silence, Reset, and Drill functionality with visual confirmation
- Color-coded, prioritized, and scrollable signal list
- 1,000 programmable soft keys for advanced configuration
- Supports multi-language operation: English, Arabic, Hebrew, Portuguese, and Spanish
- Compatible with the Potter Fire Panel Programmer for programming and firmware updates — no new software required

SCUI-1000 – Smoke Control User Interface /

The SCUI-1000 provides a dedicated interface for annunciating and manually operating smoke control functions within engineered smoke management systems.

- Dedicated Smoke Control Interface – Clear annunciation of fan, damper, and smoke control statuses
- Direct Manual Operation – Execute life-safety sequences defined by the engineered design
- Flexible Deployment – Integrates with the IPA-4000E or installs remotely through the SCUI sidcar
- Streamlined Layout – Organized controls built for clarity in high-pressure conditions
- Panel-Integrated Operation – Works with compatible Potter panels for unified system performance
- Engineered for Code-Driven Use – Supports the functions required for compliant smoke management systems



New Products

Peer-to-Peer Networking /

Potter's peer-to-peer networking solution allows all new and existing IPA Series, AFC Series, and PFC-4064 fire alarm panels to communicate on a dedicated ethernet or fiber network.

When networked, users can allow point control between panels, use a single panel for central station reporting for a network, and employ network annunciators for total system control on up to 200 panels.

With the simple installation of an ethernet or fiber-based P-Link card and a panel firmware update, users can network their existing systems without the need of purchasing new fire panels. Additionally, programming the network is done within Potter's Panel Programming Software and does not require an additional application.

P-Link Networking Cards:

NCE-1000 Ethernet Networking Card & NCF-1000 Fiber Optic Networking Card

Learn more by visiting:

pttr.us/networking



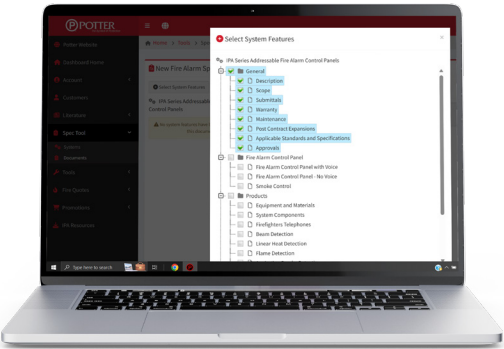
PotterSpec™ /

Specification Clarity. Project Confidence.

Designed for those who design.

PotterSpec is a precision-built specification tool that aligns directly with Potter's IPA Series and the full suite of Potter fire alarm platforms. Built for engineering professionals, it allows you to generate clean, accurate, and fully customized fire alarm specifications that reflect your actual system design — not an approximation.

This is where precision begins — before submittals, before bidding, before installation.



Engineered Systems Distributor Program /

At Potter we understand that to be successful, our Engineered Systems Distributors need to be successful. We take this partnership role with our Engineered Systems Distributors very seriously. A great deal of effort has been made to ensure that our ESD program can provide the products, tools, and support necessary for you to profitably grow your fire alarm systems business with Potter as your cornerstone product line. Some of the advantages you will find as a Potter ESD are:



Protected Territories /

Potter is committed to helping you protect your customer base and improve your profit margins. We will not saturate your area with more Potter Engineered Systems Distributors than what is required to provide reasonable Potter representation and to meet the service level expectations of the end users and specifiers in your market area.

Flexible Service Options /

In today's marketplace, it is imperative to protect your customer base from service and monitoring takeovers but also be able to provide systems that can be serviced using over-the-counter equipment. As a certified Potter Engineered Systems Distributor, you will be able to do both with a single product line. Using Potter's unique Protected Mode feature, your installations can be secured to prevent unauthorized service, or they can remain open to provide the end user additional service choices. No longer are you required to support 2 different series of fire alarm equipment in order to adapt to these different job requirements. This reduces inventory requirements and provides a great deal of flexibility in the field.

Designed with Profitability in Mind /

Potter's feature rich and cost effective IPA series of IP enabled fire alarm systems will help your organization be more competitive and profitable on the small to medium size projects that make up the majority of the market. Potter's IPA-4000 system can be scaled to support over 4,064 SLC device addresses and provide you these same competitive advantages in the large end of the market. This includes support for campus and other multi-building applications where multiple panels can be connected to share a single communication path to a central station.

5-Year Warranty /

Potter's reputation for quality and service has been the catalyst towards our focus for the design, development, and manufacture of the highest quality and most reliable life safety products available today. That is the reason Potter provides an industry leading 5-year warranty on all major products.



Integration Partners /



Mass Notification
and voice evacuation
solutions



Aspirating Smoke
Detection



Air sampling smoke
detection and special
application detection
equipment



Fire alarm notification
appliances, area of
refuge



Surge protection
equipment



Audible and visual
signaling devices



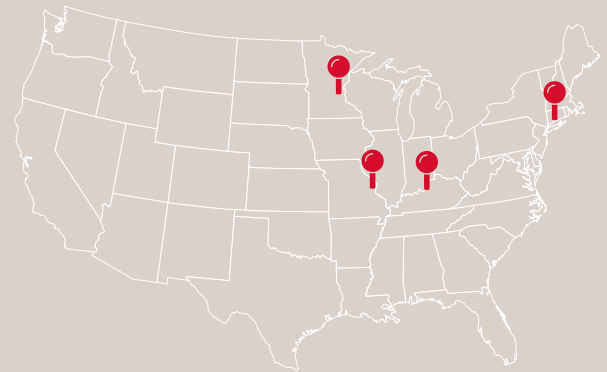
Advanced early
detection products



Graphic annunciators,
smoke control panels,
and accessories



Graphic Annunciators/
Smoke Control



Designed & Assembled in the USA /

Potter prides itself on offering a full line of fire alarm equipment assembled in St. Louis, Missouri and Branford, Connecticut. With engineering teams located in Maple Grove, Minnesota; and Louisville, Kentucky; Potter continues to provide the latest innovations direct from America's heartland.



Potter Global
Technologies

