

# CRC-300

## RELEASING CONTROL PANEL





### A Simple Solution for Single-Hazard Fire Protection

The CRC-300 is our latest conventional releasing control panel for clean agent, pre action, and deluge fire suppression systems. It is easy to set up, safe to operate, and dependable in critical situations

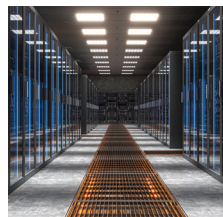
*This product is not available for sale or use in the United States.  
For Multi-Hazard applications please refer to our PFC-4410G3.*



## WHY INTEGRATORS CHOOSE CRC-300

- 
**Minimises False Discharge Risk:**  
 Advanced release logic protects people, assets and uptime.
- 
**Speeds Installation & Commissioning:**  
 Pre-configured programs and intuitive setup reduce time on site.
- 
**Improves System Visibility:**  
 Clear status indication and event history simplify diagnostics.
- 
**Reduces Ongoing Maintenance Time:**  
 Built-in testing tools and Ethernet access streamline servicing.

## IDEAL APPLICATIONS



### Data Centres

Clean agent control with precise release logic and clear system feedback.



### Power Generation Facilities

Robust suppression control designed for high-consequence environments.



### Industrial Manufacturing

Flexible configuration for complex hazard protection.

## ENGINEERED FOR PERFORMANCE

### 1. Advanced Release Control

- Programmable cross zoning (AND/OR)
- Protected releasing circuits
- Five abort modes
- Pre-discharge and soak timers

*Designed to prevent unwanted discharge while maintaining fast, controlled activation.*

### 2. Fast Setup & Flexible Configuration

- Up to 26 standard programs stored in memory
- On-board menu-driven programming
- No laptop or specialist software required

*Reduces commissioning time and simplifies configuration on site.*

### 3. System Intelligence & Maintenance Efficiency

- Large 4 x 20 LCD display
- Alarm, trouble and discharge indicators
- 1,000 event history buffer
- Walktest with automatic timeout
- Integrated battery meter
- Ethernet event history download
- Firmware updates over Ethernet

*Provides clear diagnostics and faster service response.*



### CRC-300

Conventional Single-Hazard Releasing Control Panel

**5-Year Manufacturer's Warranty**



### Compatible Devices

**PC-2P** Photoelectric Smoke Detector

**PC-2H** Heat Detector

**PC-2PH** Photo & Heat Detector

**ARM-1** Auxiliary Relay Module

**RCDS-1 / RCD-2001** Release Circuits Disable Switch

**Abort-R** Abort Switch

Please speak to our experts for the full list of compatible devices.

## GET IN TOUCH

Speak to your Potter representative about your next project.

